



# Central Management Software

## User Manual

NO.	IP	User Name	Time	Log
1	DBSTB8FEH0U3BM6MYRJ	admin	2013-10-10 11:10:49	Close video !
2	192.168.1.107	admin	2013-10-10 11:10:27	Open video !
3	DBSTB8FEH0U3BM6MYRJ	admin	2013-10-10 11:10:25	Open video !
4	DBSTB8FEH0U3BM6MYRJ	admin	2013-10-10 11:10:25	Close video !

---

1	Overviews.....	1
1.1	Key Features.....	1
1.2	Installation Requirements.....	1
1.3	Software Installation.....	2
2	Surveillance Software GUI.....	3
2.1	Login Window.....	4
2.2	Surveillance Window.....	5
3	Advanced Settings.....	15
3.1	Cameras.....	15
3.1.1	How to manage Areas.....	18
3.1.2	How to manage cameras.....	20
3.2	System Settings.....	25
3.2.1	Device Status.....	26
3.2.2	Basic Settings.....	28
3.2.3	Network.....	32
3.2.4	Video.....	39
3.2.5	Alarm.....	42
3.2.6	Record.....	45
3.2.7	PT.....	46
3.2.8	Path Settings.....	48
3.2.9	Firewall.....	49
3.2.10	System.....	50
3.3	Record and Alarm.....	51
3.3.1	Record and Alarm.....	51
3.3.2	Storage path and others.....	53
3.4	Users.....	54
4	Play back.....	54
5	LOG.....	56
6	Lock.....	57
7	Obtaining technical support.....	58

# 1 Overviews

FOSCAM offers the most comprehensive central management software IP Camera Client, designed for managing all FOSCAM IP surveillance cameras with numerous features.

It supports management or monitoring multiple cameras for monitoring, recording, playback, and alarm management with efficient control.

## 1.1 Key Features

- ◆ Powerful function for multiple live views
- ◆ Real-time 64 channel live viewing
- ◆ Supports three recording methods: alarm recording, manually recording and recording schedule management
- ◆ Web-based configuration page embedded in the client for all functions
- ◆ Intelligent Pan/ Tilt camera control
- ◆ Supports Preset Positions
- ◆ Multi-level users management with password protection
- ◆ Supports playback recording files
- ◆ Supports two-way audio
- ◆ Supports multi-path to save the video
- ◆ Supports Logs Management
- ◆ Supports multi-language installation package

## 1.2 Installation Requirements

**PC:** Pentium IV or above

**CPU:** 2.0G or above

**RAM:** 2.0G or above

**Hard Disk Space:** 120G or above

**Suggested Display Screen:** 1280 x 768

**Suggested Operation system:** Windows XP, Windows 7, Windows 8.

**NOTE:**

- The number of linked device has much relation with the computer performance and the network bandwidth.
- In order to avoid can not play the video preview interface and other issues, please use the CMS update the computer's graphics driver before

## 1.3 Software Installation

- 1) Insert the CD in the CD drive of your computer. Open the CD; find the software “FOSCAM Client.msi”.
- 2) Double click the software and install the program.

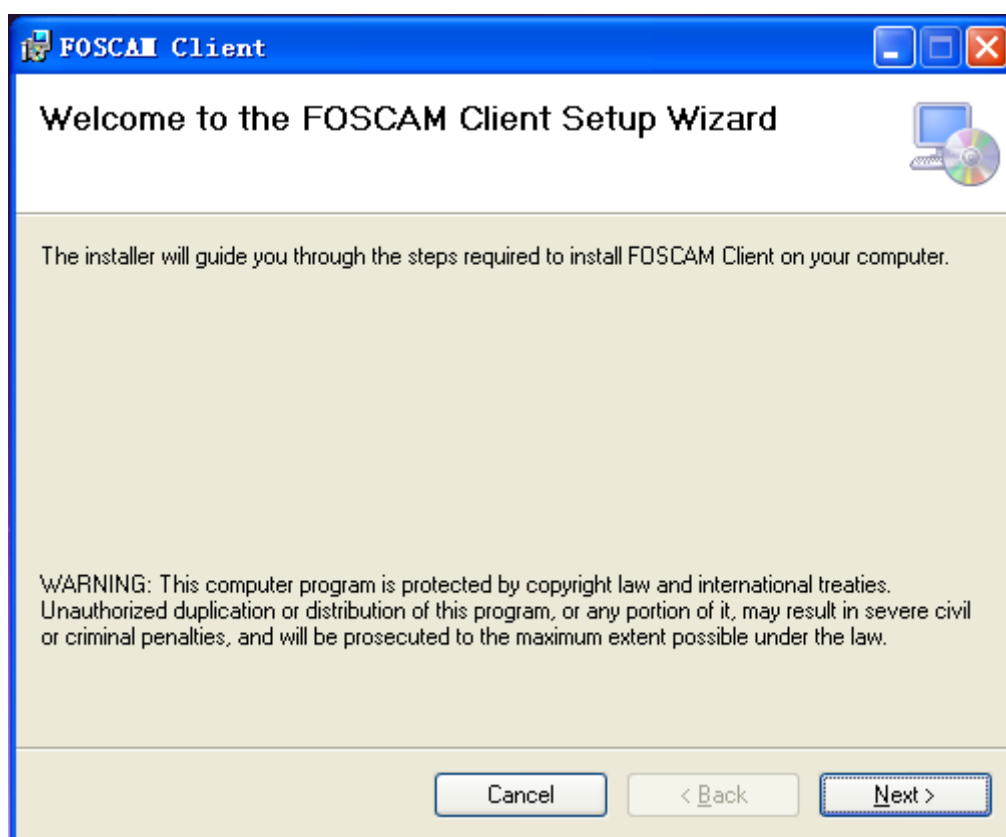


Figure1.1



Click Next till you see the following screen:

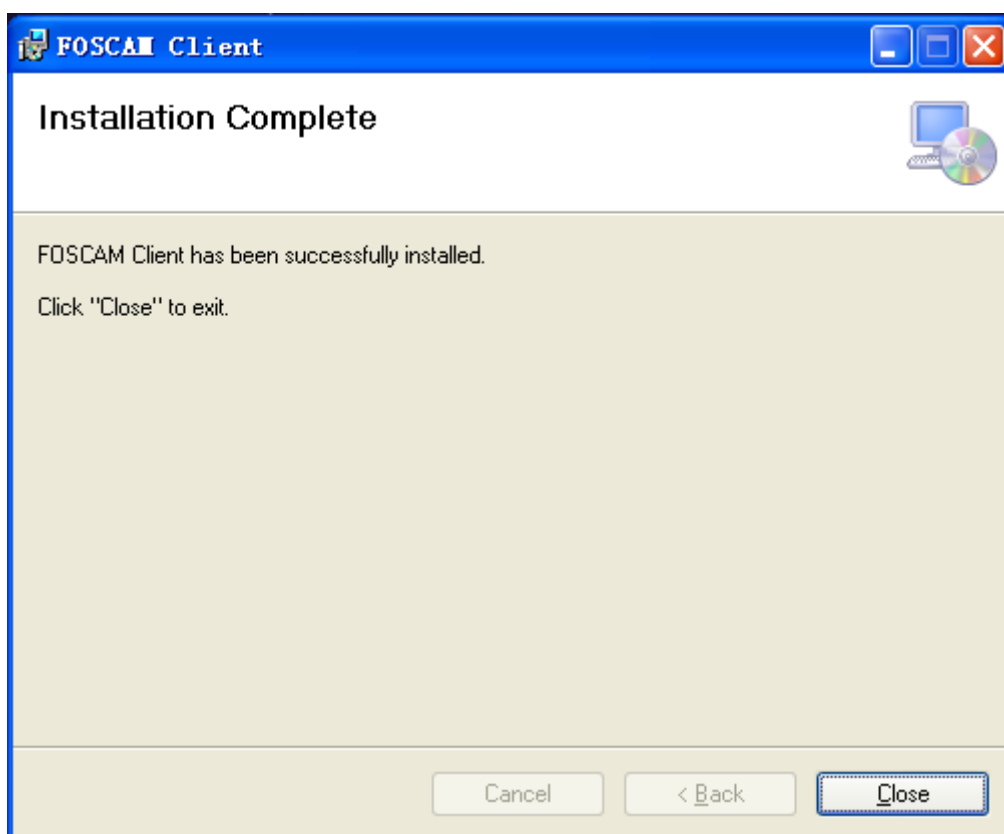


Figure1.2



FOSCAM  
Client

Click Close and complete the software installation. An icon appears on the desktop automatically after a successful installation.

**Note:** Sometimes the program will be treated as virus, so before installing, please add the software as trusted program on your computer.

## 2 Surveillance Software GUI

After finishing software installation, you can take time to learn the operation of the software.

## 2.1 Login Window

FOSCAM  
Client

Double click the shortcut icon and it will pop up the login window:

Figure2.1

Please check the login window above, it was divided into 4 sections from no. 1 to 4.

### Section1 User Name & Password

The default User Name and Password are both admin.

#### NOTE :

At your first time logging in the software, choose “**Settings**” on the top of the software interface and go to the “**Users**” panel, then reset the username or password to prevent intruders access.

### Section2 Select Language

Supporting multi-language installation package, the system will automatically identify the language, such as the system is in English, the installation wizard will be in English .

### Section3 Remember Password

Select it and you need not to re-enter the username & password next time logging in.

### Section4 LOGIN

Click LOGIN button and login the software.

## 2.2 Surveillance Window

Click LOGIN button and you will enter the surveillance window.

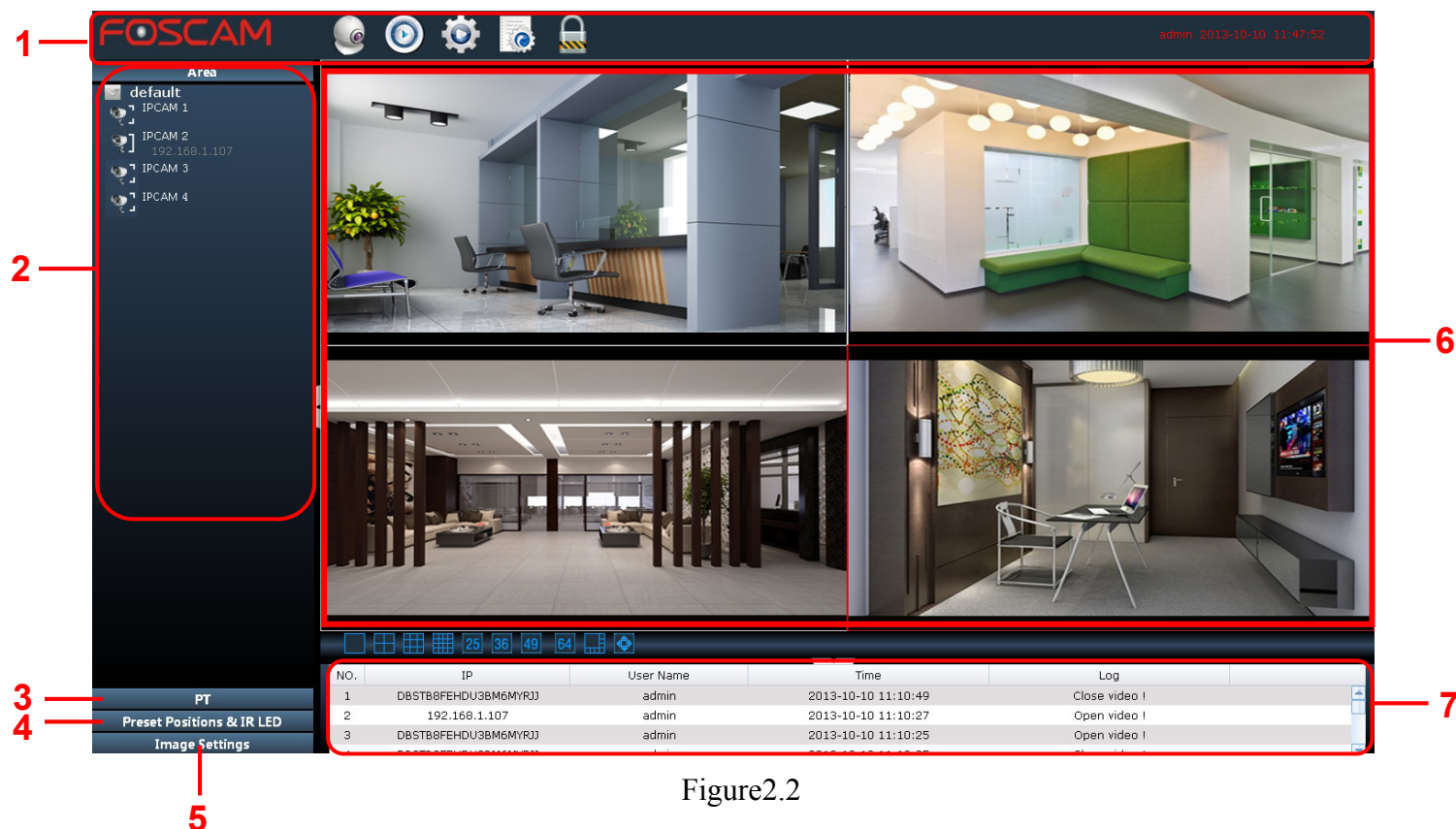


Figure2.2

First time you login the software, the whole video window is black, you need to add cameras to it and connect the cameras. ( please read chapter 3.1.2 about how to add cameras).

**Please check the surveillance window above, it was divided into 7 sections from no. 1 to 7.**

### Section1 Menu bar



Click this button and read user manual



Minimize the program



Close the program



FOSCAM LOGO



Click it and back to the live view screen



Click it and back to the Playback UI



Click it and back to Setting UI



Click it and back to the LOGS UI



Lock the current screen

admin 2013-07-10 10:28:00

The user account who accessing the client and the PC time now


## Section2 Camera List Tree (Area)

After adding device to the client, you can see the cameras in the Camera list tree panel (please read chapter 3.1.2 about how to add cameras).

**Area:** When you add cameras to the client, you must select one area for the camera. You can define a name for the area.

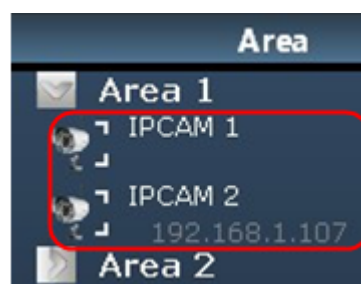
### For example:

You want to add one camera to the client which is installed in the garden, then you can create a new area named “garden”. Then add the camera to the area “garden”. So when the camera alarmed, you can know which camera and where it is installed immediately.

There is a icon  before the area name, click it and you can see all cameras that belong to the area.



Click this icon




All cameras that belong to Area 1

Figure2.3

There are two status for one camera:



The camera has been added to the client but not connected and you cannot see the video of the camera. Click the icon, if the camera connected successfully, the icon will be changed to  and you can see the video.



Device Name & IP

Figure2.4

**Device name:** The Device Name is a name that you can give to your device to help you identify it. You

can define a name for your camera in the Settings panel.

If the camera has been connected successfully, click the video of the camera, you can see four icons below the camera icon, such as the following picture.



Figure2.5

**Audio:** Click the icon then you will hear sound captured by the camera's built-in microphone. You may need to plug in earphones or enable the computer speakers to hear from the camera's microphone. Make sure the camera supports audio. Click again and stop audio.

**Record:** Click it and do manually recording. You can see a green record icon in the video. Click it again and stop recording. The recording files will be stored to C disk automatically. Please go to this panel to change the storage path: Settings-> Record and Alarm panel (chapter 3.3.2).

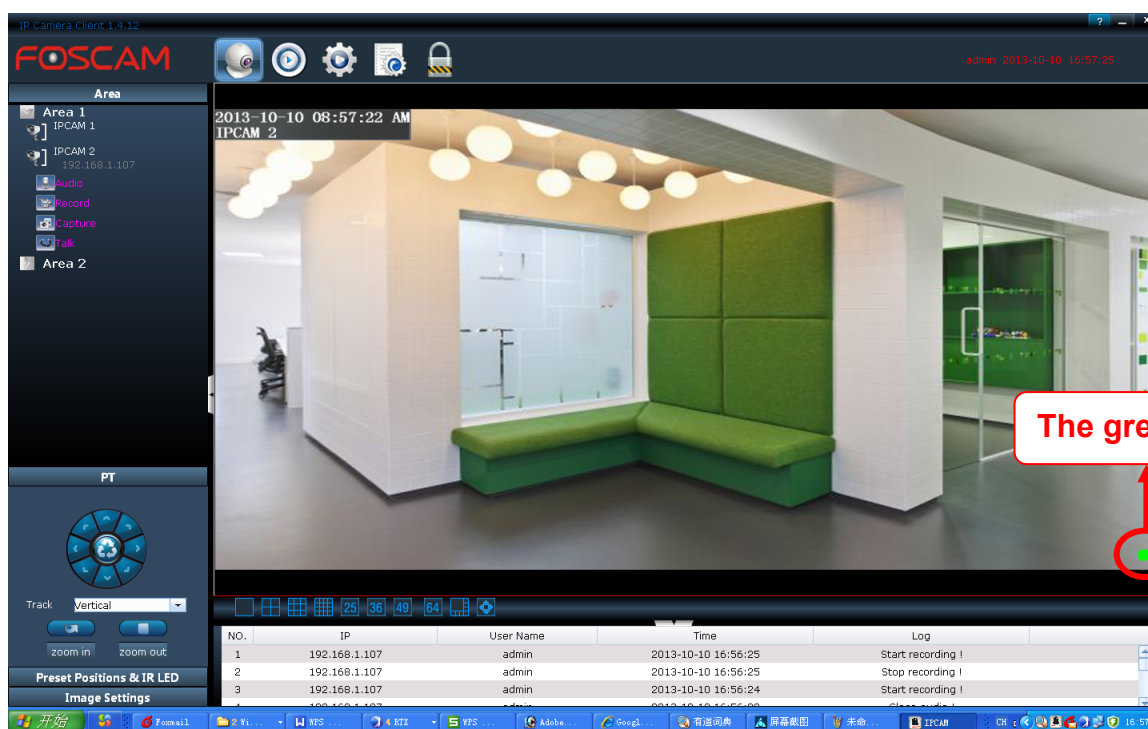


Figure2.6

**Capture:** Click this button to take a snapshot of the video and the snap pictures will be stored to C disk. Please go to this panel to change the storage path: Settings-> Record and Alarm panel (chapter 3.3.2).

**Talk:** Click the talk icon and talk through your computer's microphone which will transmit through the camera's speaker. People will hear your talking through the camera's built-in speaker or other audio

output device. Click the icon again and stop talking.

### Section3 PT(Pan / Tilt)

Click one connected device video, then click PT, if the camera supports PT, here you can operate the cradle head.



Figure2.7

FOSCAM has two series cameras: MJPEG and H.264. There is something difference between two series (as the above picture), H.264 cameras support Track, MJPEG supports Horizon / Vertical Cruise.

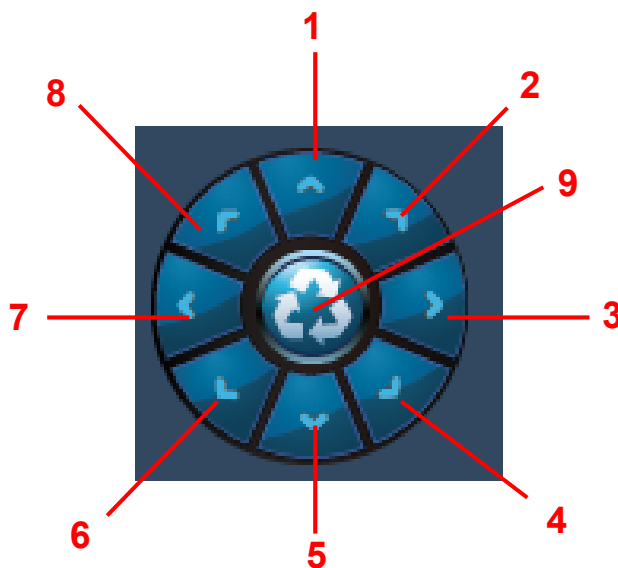


Figure2.8

- |                             |                                  |
|-----------------------------|----------------------------------|
| 1-----Up control button,    | 2----- Up-Right control button   |
| 3----- Right control button | 4----- Down-Right control button |
| 5-----Down control button   | 6----- Down-Left control button  |
| 7----- Left control button  | 8----- Up-Left control button    |
| 9-----Go to center          |                                  |

## For MJPEG Cameras



: Click the icon and the camera will horizontally rotate.



: Click the icon and the camera will vertically rotate.



: Click this icon and stop rotating.

If you only click the horizon or vertical cruise button, the camera will patrol circles that you set before and then stop.

You can know and change the patrol circles by the following two ways:

- 1) Login the camera by the explorer and change the circles number in the web UI (Please read the user manual of the camera).
- 2) Go to Settings-> System->PT panel in the client and change the circles number

## For H.264 Camera



Select one track and click Go, the camera will cruise following the predefined path. Click Stop button and finish cruising.

You can add tracks by the following two ways:

- 1) Login the camera by the explorer and go to PT panel in the web UI (Please read the user manual of the camera).
- 2) Go to Settings-> System->PT panel in the client and add tracks

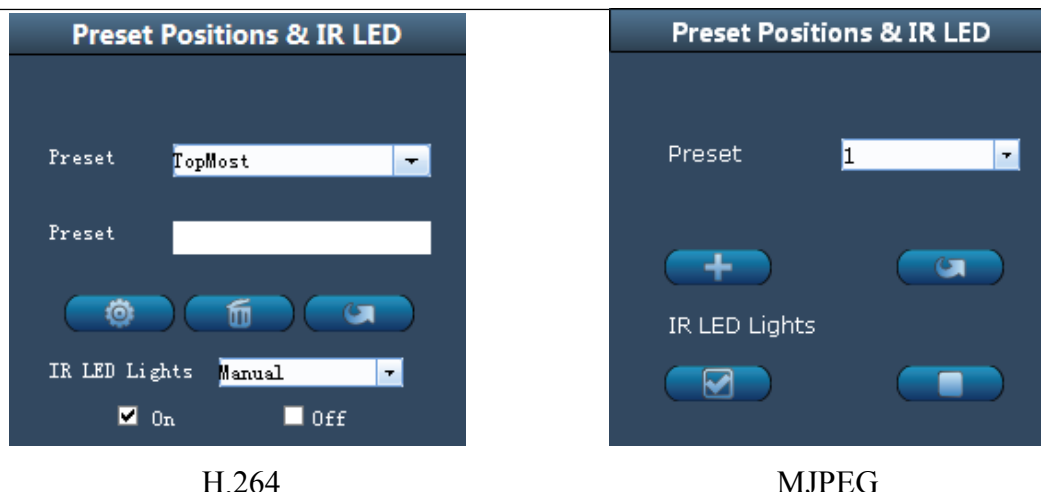
It supports zoom function. You can press the "zoom in" or "zoom out" button to zoom, and release the button to stop.

### Note:

- 1) Login the camera by the explorer and go to PT panel in the web UI (Please read the user manual of the camera).
- 2) Go to Settings-> System->PT panel in the client

## Section4 Preset Position & IR LED

Click one connected device video, if the camera has connected with / built-in the cradle head, then you can set **Preset Position and IR LED**.



H.264

MJPEG

Figure2.9

### For H.264 Camera



**Preset:** Move the camera and stop at a desired place where you want to make preset position, click Preset button to set preset position.



**Delete:** Select one preset position and click this button to delete it.



**GO:** Select one preset position in the preset dropdown list and click Go to make the camera move the preset position

**IR LED Lights:** Here supports Manual and Auto.

### How to do preset position?

**Firstly**, move the camera and stop at a desired place where you want to make preset position.

**Secondly**, enter a descriptive name for the preset position in the second preset blank box. Then click Preset to save it.



Figure2.10

**Thirdly**, you can see the added preset positions by clicking the dropdown bar after the first Preset.



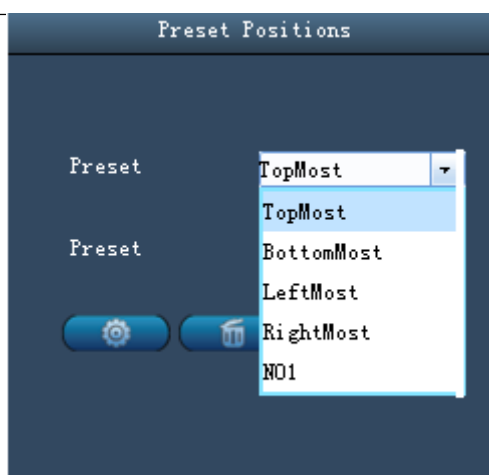


Figure2.11

After that, you can move the camera and stop at another place, and set the other preset positions. You can do all the preset positions with this method.

#### NOTE:

- 1 The preset position name cannot contain blank space and other special characters. Or else the preset position cannot be added.
- 2 For H.264 series cameras, the camera supports up to 16 preset positions.

#### For MJPEG Camera



Figure2.12



**Add:** Move the camera and stop at a desired place where you want to make preset position, click Add button to set preset position.



**GO:** Select one preset position in the preset dropdown list and click Go to make the camera move the preset position.

### How to do preset position?

We can start preset settings from position 1.

**Firstly**, select no. 1 within the menu of Preset on the panel.

**Secondly**, move the camera and stop at a place where you want make preset position.

**Thirdly**, click Add button to save it as position 1 and you have done preset of position 1.

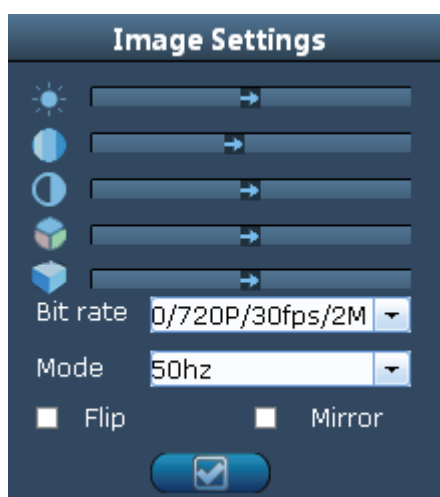
After that, you can select no. 2 within the menu of Preset on the panel, and move the camera and stop at another place, and set as preset position 2. You can do all the 8 preset positions with this method.

If you want to see the preset position you have set, such as the position 1, only select the preset no.1 ,and click **go** button, the camera will go to position no.1.

**Note:** For MJPEG series cameras, the camera supports up to 8 preset positions.

## Section5 Image Settings

Select one connected device video then adjust the quality of the video.



**H.264**



**MJPEG**

Figure2.13

Brightness, contrast, hue and saturation are used to adjust the quality of the video.

### Flip & Mirror

If you'd like to see the inverted image, select "Flip" . And you can select "Mirror" , if you'd like to see the effect of the mirror.

### For H.264 Cameras

#### Bit rate

The default stream supports four modes: 0/720P/30fps/2M, 1/VGA/25fps/2M, 2/VGA/ 15fps/ 1M and 3/VGA/10fps/200 . The format of the stream type is Stream type no. / Resolution / Maximum frame rate/ Bit rate

**1) Stream type no.**

The number is used to identify the stream type.

**2) 720P/ VGA**

There are two resolutions, the bigger one is 720P, and the smaller one (VGA) is 640x480 pixels. The bigger of the resolution is, the better of the image quality is. If you are accessing the camera via internet and want to get more fluent video streaming, please select resolution VGA.

**3) Maximum frame rate**

When the video format is 50Hz, the maximum frame rate is 25 fps. When the video format is 60Hz, the maximum frame rate is 30 fps. You should lower frame rate when the bandwidth is limited. Normally, when the frame rate above 15, you can achieve fluently video.

**4) Bit rate**

Generally speaking, the larger the bit rate is, the clearer video will become. But the bit rate configuration should combine well with the network bandwidth. When the bandwidth is very narrow, and bit rate is large, that will lead to video can not play well.

You can reset the bit rate by the following two ways:

- 1) Login the camera by the explorer and go to video panel in the web UI(Please read the user manual of the camera).
- 2) Go to Settings-> System->Video panel in the client

**Mode**

- 1) 50HZ -----Indoor surveillance (Region: Europe, China)
- 2) 60HZ -----Indoor surveillance (Region: USA, Canada)
- 3) outdoor-----Outdoor surveillance

**For MJPEG Camera****Resolution**

There are two resolutions, the bigger one (VGA) is 640x480 pixels, and the smaller one (QVGA) is 320x240 pixels. The bigger the resolution is, the better of the image quality is, but the lower the frame rate is. If you are accessing the camera via internet and want to get more fluent video streaming, please select resolution QVGA 320x240.

**Mode**

- 1) 50HZ -----Indoor surveillance (Region: Europe, China)
- 2) 60HZ -----Indoor surveillance (Region: USA, Canada)
- 3) Outdoor-----Outdoor surveillance (Region: All over the world)

## Section6 Live Window



Figure2.14

There is a lab bar below the video window, look the above picture:



**Multi-device window:**

The client can monitor many cameras at one page, here you can choose the display number. The display number has much relation with PC. More number, higher requirement for PC.



**Full Screen Button**


Click the icon, the client will be full-screen. Press Esc and exit the full-screen.

## Section7 Device information

When you do some operation, here you can see the results. Such as the following picture:

NO.	IP	User Name	Time	Log
1	192.168.11.203	admin	2012-12-06 16:26:41	Open video !
2	192.168.11.213	admin	2012-12-06 16:26:37	Open video !
3	192.168.11.223	admin	2012-12-06 16:26:33	Open video !
4	192.168.11.252	admin	2012-12-06 16:26:30	Open video !

## 3 Advanced Settings

Click the icon  and back to Advanced Settings panel. This page will allow you to add cameras, do system settings, Record and Alarm, Users Settings.

### 3.1 Cameras

This section will show you how to add areas and cameras to the client.

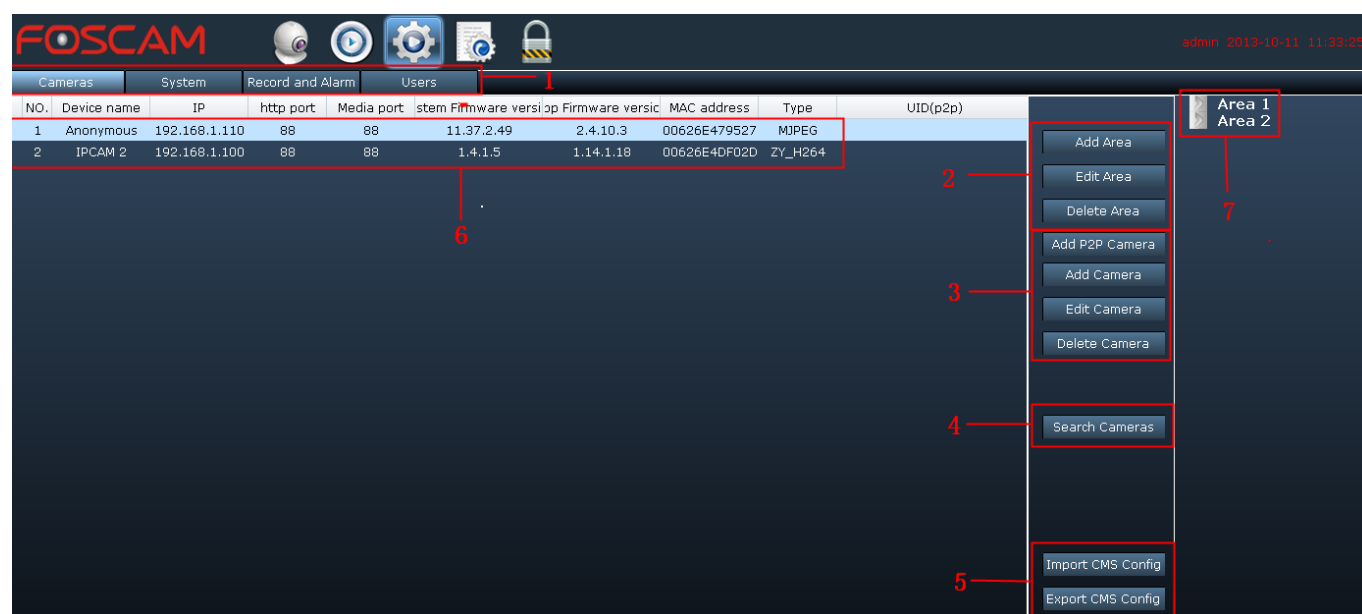


Figure 3.1

The default Camera list tree is null, you need to create Area first then add cameras to the area.

**Please check the windows above, it was divided into 6 sections from no. 1 to 6.**

#### Section 1 Camera/System/Record and Alarm/Users Buttons

**Cameras**: Click this button and go to Camera panel, you can add Cameras and Area to the client

**System**: Click this button and go to System panel, you can do settings about the added cameras

**Record and Alarm**: Click this button and go to Record and Alarm panel, this page will allow you to do alarm settings about the added cameras.

**Users**: On this panel, you can alter the login user account and add other login users.

## Section 2 Area

**Add Area**: Click this button and it pop up the following windows, then you can add areas to the client

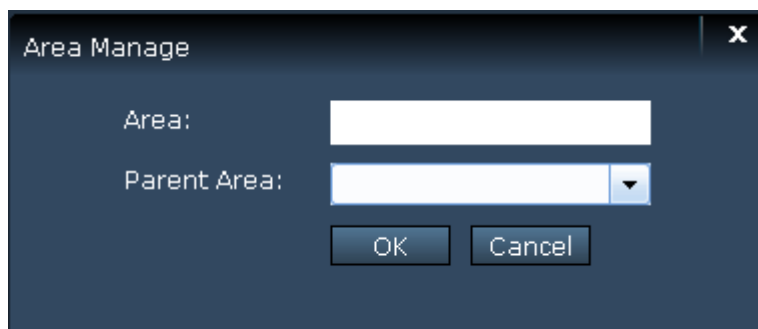


Figure 3.2

**Note:** The first area has no parent area.

**Edit Area**: Click this button and change the area name of the added areas

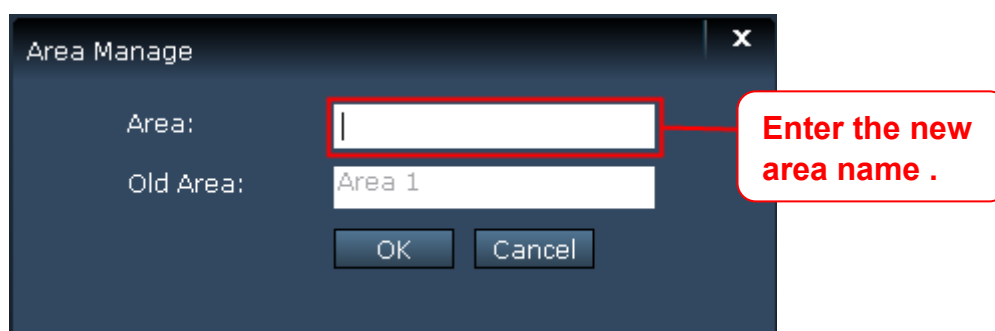


Figure 3.3

**Delete Area**: Delete one added area, and the cameras that added to the area will be deleted at the same time.

## Section 3 Add/ Edit / Delete cameras

**Add P2P Camera**: Click this button and add one P2P camera to one area .

**Add Camera**: Click this button and add one camera to one area.

**Edit Camera**: Click this button and re-edit the added cameras .

**Delete Camera**: Delete cameras that have added to areas .

## Section 4 Search cameras in LAN

**Search Cameras**

: Click this button and the software will search all cameras in LAN automatically.

## Section 5 Client Configuration area

**Import CMS Config**

When you set up the device after clicking this button, it will generate a client configuration file automatically. And this file will save your settings automatically.

**Export CMS Config**

Click this button to select your previously generated client configuration file, and it will restore your previously saved settings.

## Section 6 Some information about the searched cameras

This section will show you some information about the searched cameras in LAN.

NO.	Device name	IP	http port	Media port	System Firmware version	App Firmware version	MAC address	Type	UID(p2p)
1	Anonymous	192.168.1.110	88	88	11.37.2.49	2.4.10.3	00626E479527	MJPEG	
2	IPCAM 2	192.168.1.100	88	88	1.4.1.5	1.14.1.18	00626E4DF02D	ZY_H264	

Figure 3.4

**Device name:** The Device Name is a unique name that you can give to your device to help you identify it.

Click **System** → **Basic Settings** and go to **Device name** panel where you can change your camera name.

The default device name is anonymous.

**IP:** The cameras' IP addresses in LAN.

**HTTP/Media Port:** The Media port is used to view the camera's video stream, HTTP Port is used to access the camera remotely. If you want to access the camera and view the video, the Media Port and the HTTP Port must both be configured correctly. For MJPEG Cameras, the HTTP and Media share the same port. For H.264 Cameras, HTTP and Media ports must be different.

**System Firmware version/ App Firmware version:** Display the firmware and App version of your camera.

**MAC address:** Display the wired MAC address of your camera. For example Device ID is 000C5D00008, the same MAC ID sticker is found at the bottom of the camera.

**Type:** FOSCAM company has two series cameras: H.264, MJPEG and MJ-5350. ZY\_H264 shows the camera belongs to H.264 series. MJPEG and MJ-5350 shows the camera belongs to MJ series.

**UID(P2P):** With P2P function models will have their own separate UID. You can find the camera's UID on the label which is on the bottom of the camera.

## Section 7 Area and Cameras Tree

This section will show you the added areas and cameras.

### 3.1.1 How to manage Areas

This section will show you how to create/ edit/ delete the areas.

#### Create Area

Before adding devices to the client, you must create areas first.

Click **Add Area** button, you will see the following dialog box.

- 1) Enter the area name
- 2) If the area belongs to another area, here select the parent area.
- 3) Click OK to take effect.

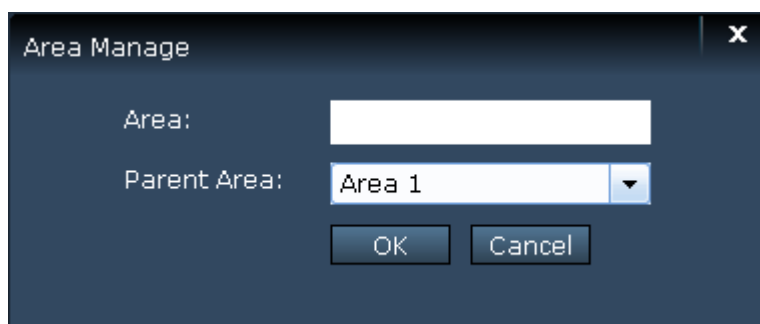


Figure 3.5

**NOTE:** The first area has no parent area.

You can add other areas as the same way. On the right part of the Camera panel, you can see the areas you have created.

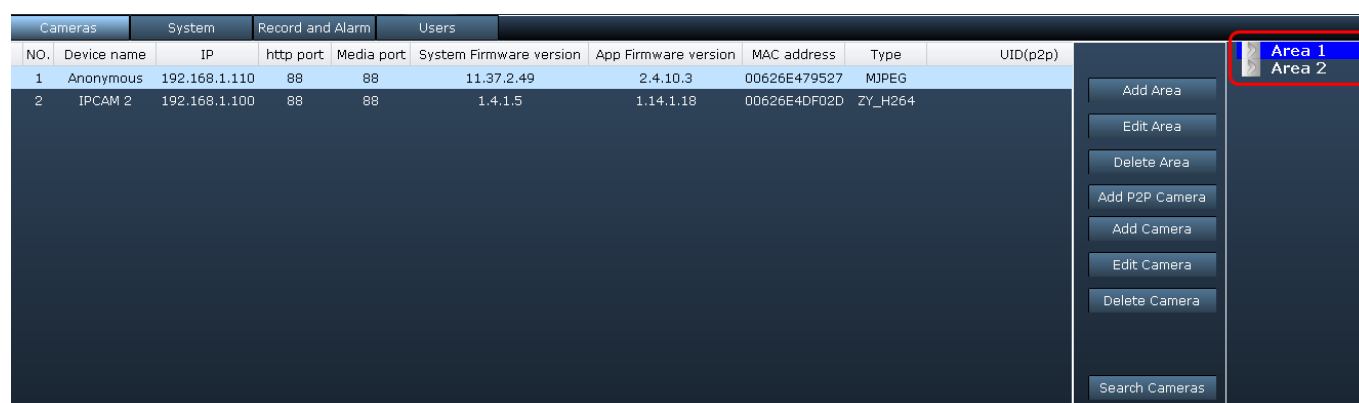


Figure 3.6

#### Edit Area

Select one area and click **Edit Area** to change the area name.

- 1) Select one added area ( just by clicking the area name) .
- 2) Click Edit Area .



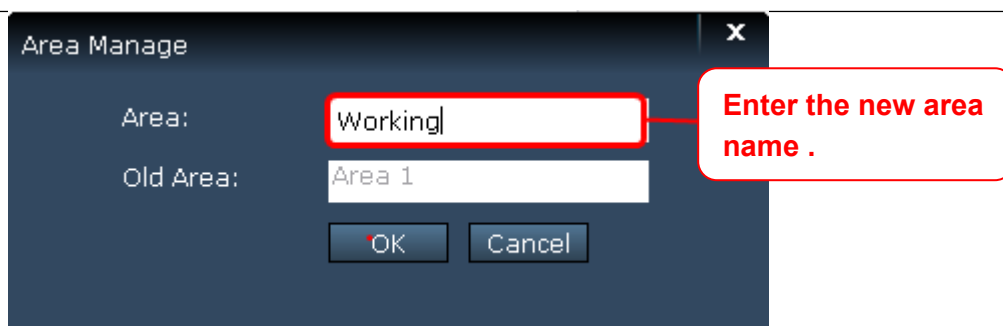


Figure 3.7

- 3) Enter the new area name and click OK to take effect .
- 4) You can see the new name area .

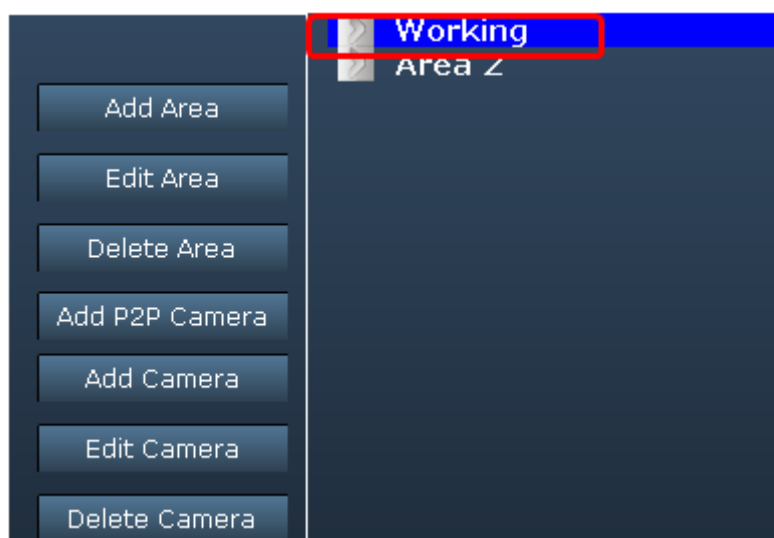


Figure 3.8

## Delete Area

- 1) Select one added area ( just by clicking the area name) .
- 2) Click Delete Area button and you can see the following screen.

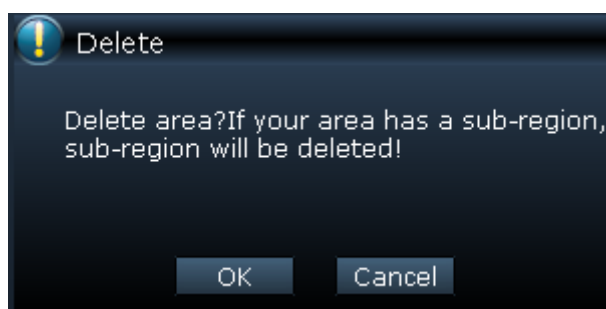


Figure 3.9

- 3) Click OK to take effect.

## NOTE:

If you have added cameras to the area, meanwhile the cameras list will be deleted.

### 3.1.2 How to manage cameras

This section will tell you how to add or delete /edit the cameras.


The following steps are required before adding cameras to the client:

- 1) Install the IP Camera(s) which want to be monitored.
- 2) Login the IP Camera(s) by web browser and set the IP address, port, username & password and make sure the camera can be accessed by browsers
- 3) DDNS setting is a plus whenever you want to add the devices by WAN

### Add cameras

The software will search all cameras in LAN automatically and also you can add cameras manually.

#### Add cameras in LAN

Click  this button and the software will search all cameras in LAN, the the camera list will be showed in the **Cameras** page.

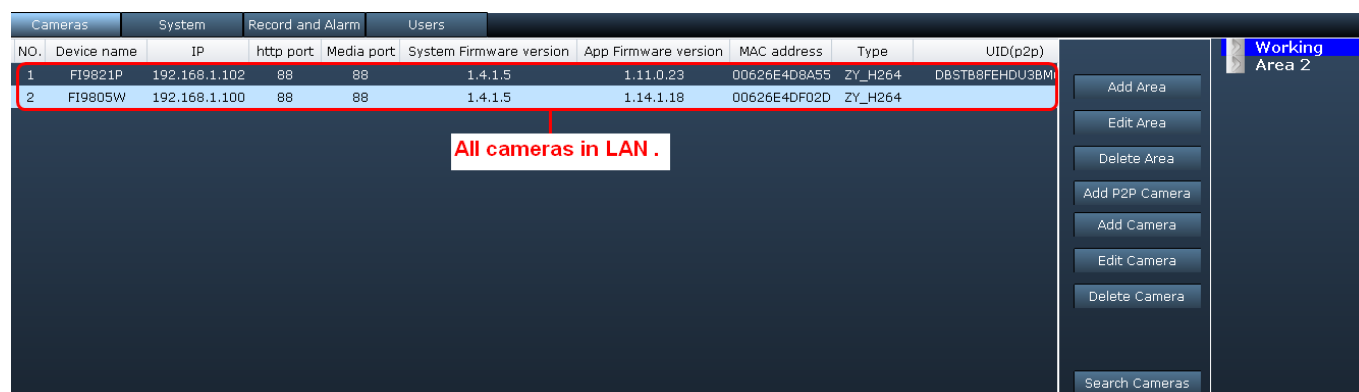


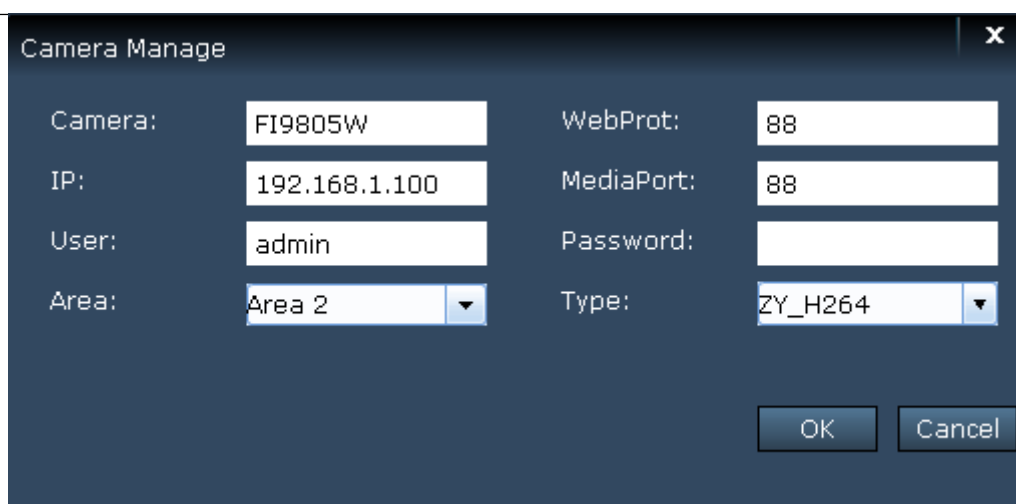
Figure 3.10

Select one searched device just only by clicking it and the device column will turn to light blue.

1	FI9821P	192.168.1.102	88	88	1.4.1.5	1.11.0.23	00626E4D8A55	ZY_H264	DBSTB8FEH DU3BM6
2	FI9805W	192.168.1.100	88	88	1.4.1.5	1.14.1.18	00626E4DF02D	ZY_H264	

Figure 3.11

Then click , it will pop-up a dialog box.



Camera Manage dialog box with the following fields:

- Camera: FI9805W
- WebProt: 88
- IP: 192.168.1.100
- MediaPort: 88
- User: admin
- Password: (empty)
- Area: Area 2 (dropdown)
- Type: ZY\_H264 (dropdown)

Buttons: OK, Cancel

Figure 3.12

**Camera:** The Device Name is a unique name that you can give to your device to help you identify it.

**Web / Media Port:** The Media port is used to view the camera's video stream, Web Port is used to access the camera remotely.

**IP:** The IP address of the camera.


**User & Password:** The User and password to access the camera.

**Area:** The area that camera belongs to.

**Type:** The type of the camera. Here support two types: MJPEG and ZY-H264 .

Click OK to add the camera to one area.

### Add P2P cameras in LAN

Click  this button and the software will search all cameras in LAN, the the camera list will be showed in the **Cameras** page.

Cameras									
NO.	Device name	IP	http port	Media port	System Firmware version	App Firmware version	MAC address	Type	UID(p2p)
1	FI9821P	192.168.1.102	88	88	1.4.1.5	1.11.0.23	00626E4D8A55	ZY_H264	D8STB8FEH DU3BM
2	FI9805W	192.168.1.100	88	88	1.4.1.5	1.14.1.18	00626E4DF02D	ZY_H264	

All cameras in LAN .

**Working Area 2**

Add Area

Edit Area

Delete Area

Add P2P Camera

Add Camera

Edit Camera

Delete Camera

Search Cameras

Figure Figure 3.13

Select one searched P2P device just only by clicking it and the device column will turn to light blue.

1	FI9821P	192.168.1.102	88	88	1.4.1.5	1.11.0.23	00626E4D8A55	ZY_H264	DBSTB8FEH DU3BM6
2	FI9805W	192.168.1.100	88	88	1.4.1.5	1.14.1.18	00626E4DF02D	ZY_H264	

Figure Figure 3.14

Then click **Add Camera**, it will pop-up a dialog box.

The 'Camera Manage' dialog box is shown with the following fields and values:

- Camera: FI9821P
- User: admin
- Password: (empty)
- Area: Working (dropdown menu)
- Type: ZY\_H264 (dropdown menu)
- UID: DBSTB8FEH DU3BM6MYRJJ

Buttons: OK, Cancel

Figure Figure 3.15

**Camera:** The Device Name is a unique name that you can give to your device to help you identify it.

**User & Password:** The User and password to access the camera.

**Area:** The area that camera belongs to.

**Type:** The type of the camera. Here support two types: MJPEG and ZY-H264 .

Click OK to add the camera to one area.

By this way, you can add cameras in LAN one by one.

#### NOTE:

Normally the IP / Web Port/Media Port can be filled automatically, here we recommend not change it, or else you may cannot access the camera by the client.

### Add cameras in WAN

Make sure the camera you want to add can be accessed by WAN IP or domain name in web browser.

- 1) Click Add Camera button and it pop up the following screen.
- 2) Here IP address will be instead by a domain name or WAN IP.
- 3) In the "WebPort" and "MediaPort" enter the port number has been set up good.

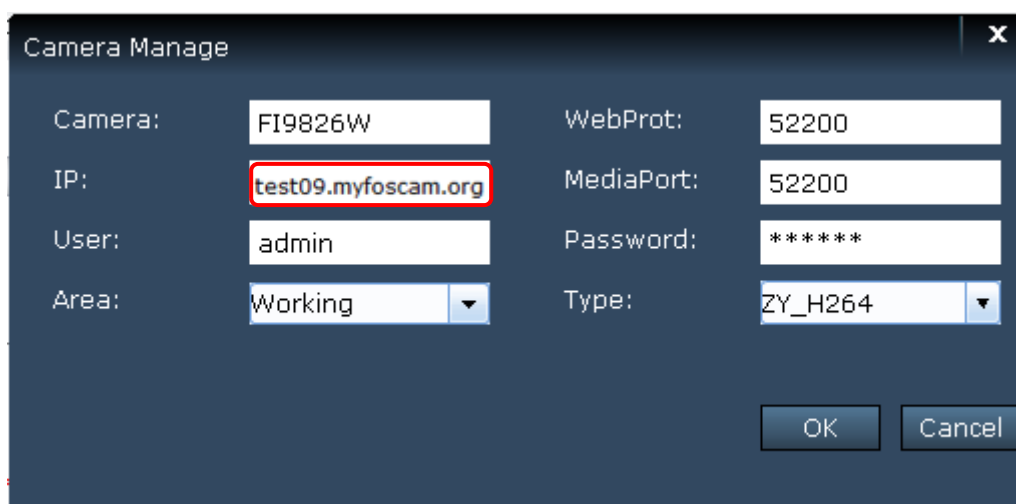


Figure Figure 3.16

If the camera has been added successfully, you will see it under the area.

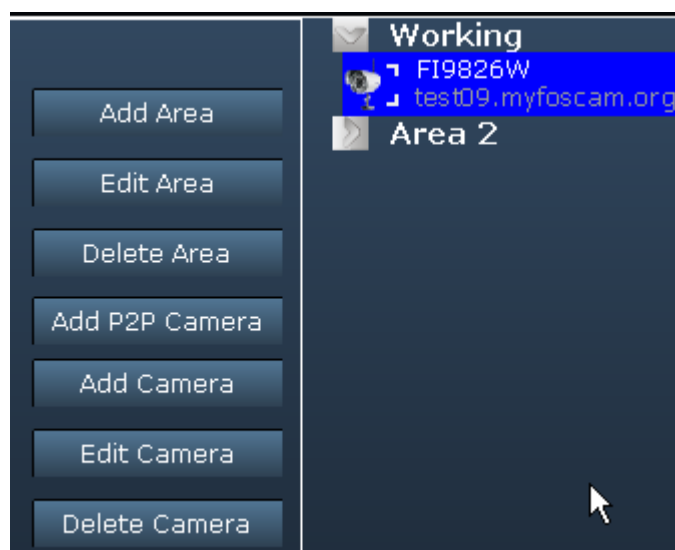
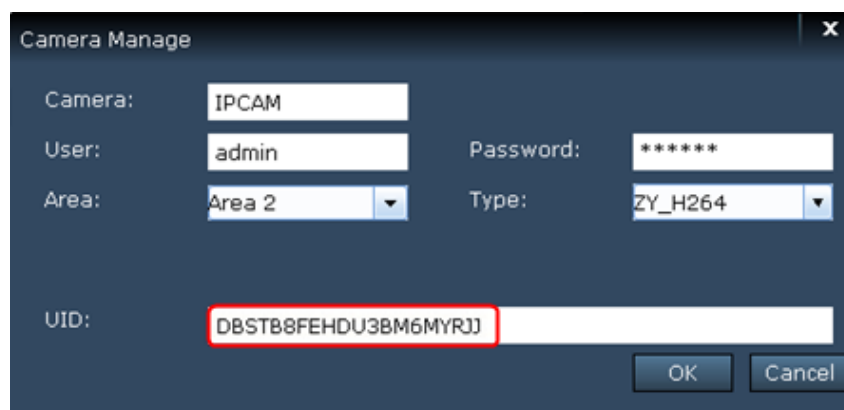


Figure Figure 3.17

### Add P2P cameras in WAN

Make sure the P2P camera you want to add can be accessed by WAN IP or domain name in web browser.

- 1) Click Add P3P Camera button and it pop up the following screen.
- 2) In the "UID", enter the camera's UID . You will find the UID on the label which is on the bottom of the camera.



Camera Manage

Camera: IPCAM

User: admin Password: \*\*\*\*\*

Area: Area 2 Type: ZY\_H264

UID: DBSTB8FEH DU3BM6MYRJJ

OK Cancel

Figure Figure 3.18

If the camera has been added successfully, you will see it under the area.

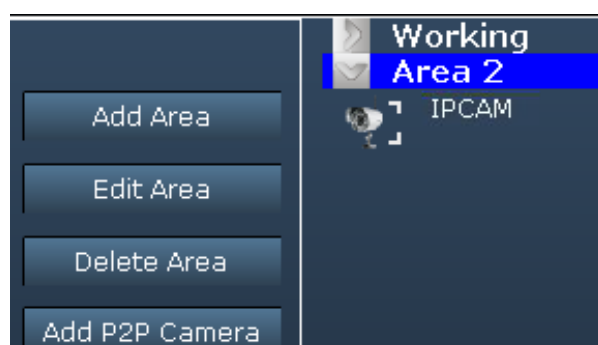
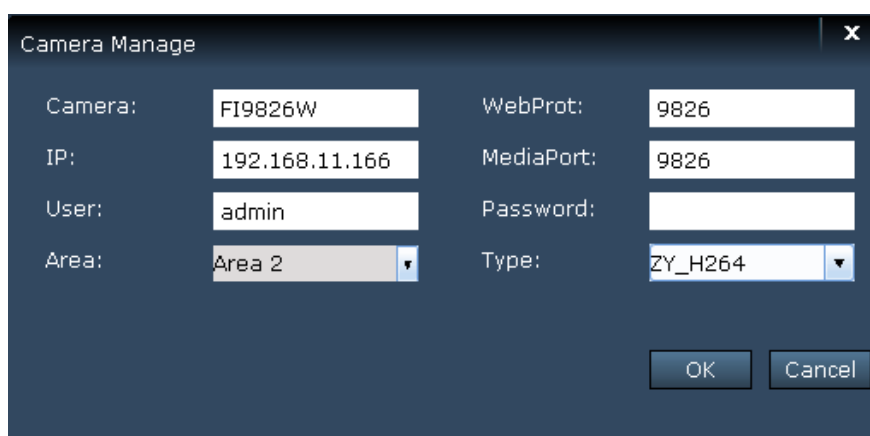


Figure Figure 3.19

## Edit Camera

If the login account or web/media port of camera that you added to the client have been changed, here click Edit camera to change the corresponding information.

- 1) Select the camera under one area which you want to edit.
- 2) Click Edit Camera button and it pop up the following screen.



Camera Manage

Camera: F19826W WebProt: 9826

IP: 192.168.11.166 MediaPort: 9826

User: admin Password:

Area: Area 2 Type: ZY\_H264

OK Cancel

Figure 3.20

This page will allow you to change the Camera, Webport, Media port, User & Password and Type.

**Camera:** The device name in the client. It has no relation with the device name in the camera web page.

3) Click OK to take effect.

#### NOTE:

Normally, if the camera's IP has changed, you need to delete it and re-add again, there cannot allow to change IP in the Edit Camera page.

## Delete Camera

Select one camera, click Delete Camera button to delete it from the client.

## 3.2 System Settings

Here you can do basic settings for the added device. These settings also can be done in the web UI of the camera.

Click System button and double click one camera name in the camera list then you can go to the System panel.



Figure 3.21

### Section 1 Function List

This section lists all functions of one camera. Double click one camera name in the Camera List, then click one function and go to the corresponding page to read or change the information.

### Section 2 Details

This page you can read the details of one function.

Click Refresh button to refresh the information.

### Section 3 Camera List

This part you can see all cameras you added to the client.

There is a button before one area name, click this button to unfold all cameras that belongs to the area.

### 3.2.1 Device Status

**For H.264 series cameras,** Device Status contains four columns: Device Status, Session Status and Log .

**Device Infor:** It will show you various information about your camera.



Figure 3.22 Device Info Page

**Device status:** On this page, you can see 10 device status information including alarm status, alarm recording state, DDNS status, WIFI status and so on.



Figure 3.23 Device Status Page

**Session satus:** It will display who and which IP is visiting the camera now.



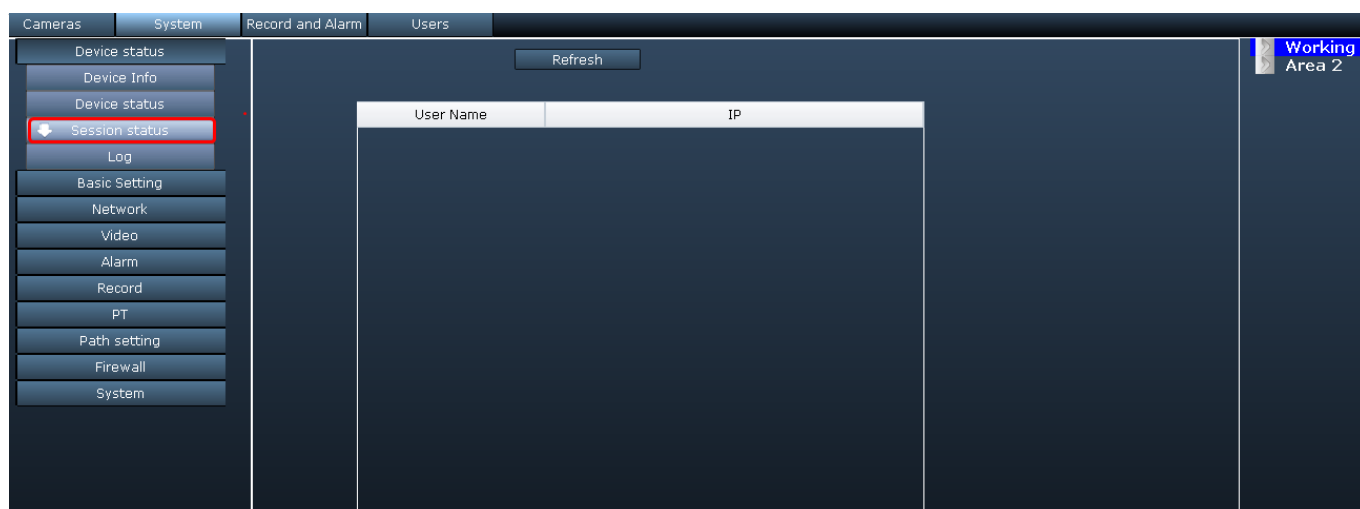


Figure 3.24 Session Status page

**Log:** It shows who and which IP address accessed or logout the camera and the time of accessing.



Figure 3.25 Log Page

**For MJPEG Cameras,** Device Status only contains two columns: Device status and Log. On Device Status page, you can see the various information about your camera, On log page, you can know who accessed the camera.

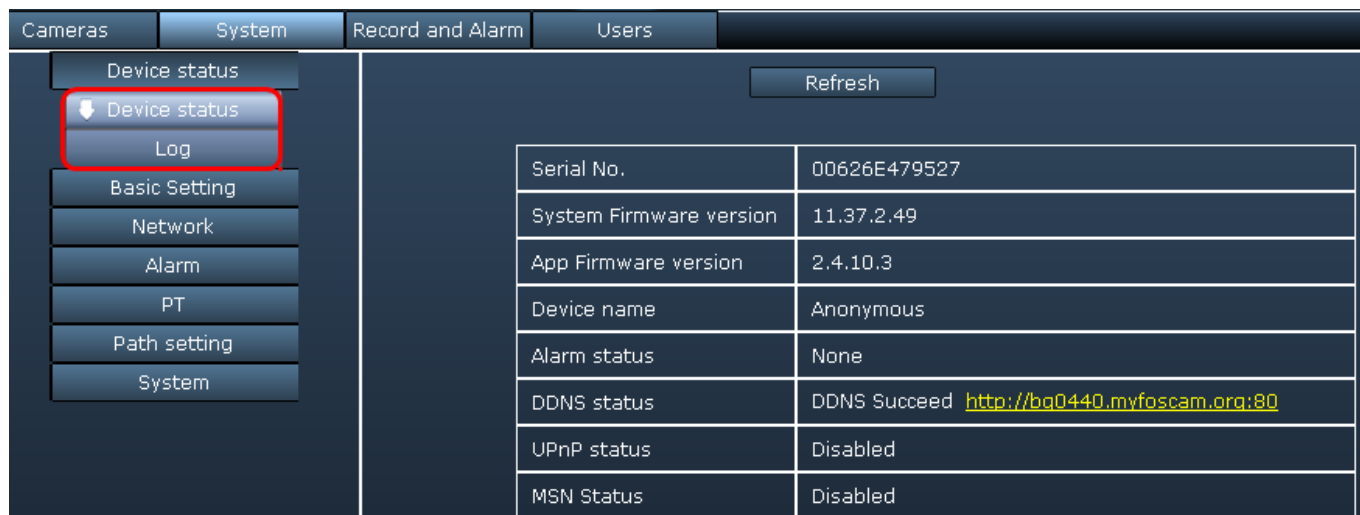


Figure 3.26

### 3.2.2 Basic Settings

This section allows you to configure your camera's Name, Time, Mail and User account.

Double click one camera icon on the camera list panel and click the corresponding function you want to change.

#### Device Name

The Device Name is a unique name that you can give to your device to help you identify it. Default **Device name** is anonymous. You can define a name for your camera here such as apple. Click **Save** to save your changes.



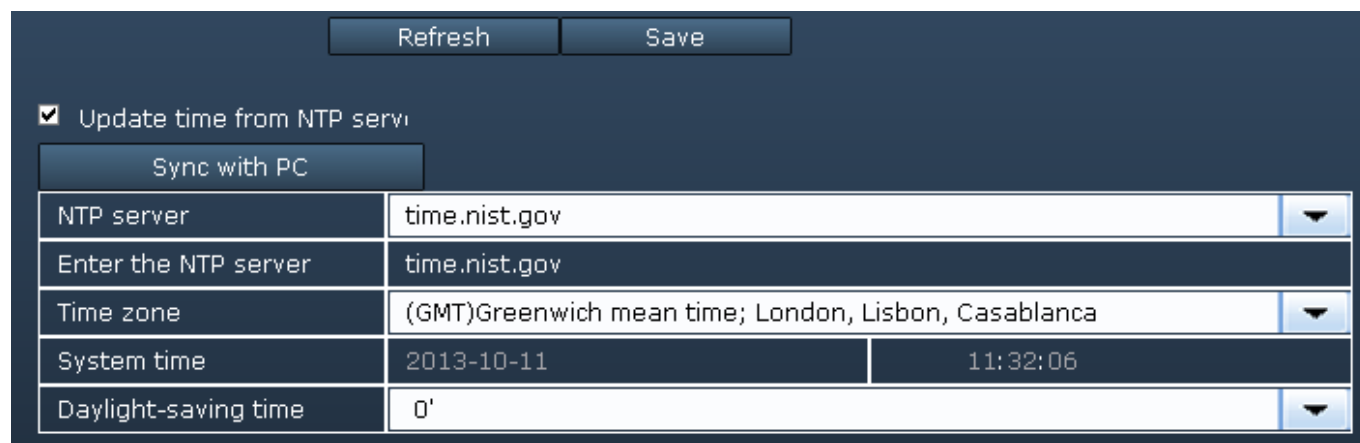
<div>Refresh</div> <div>Save</div>	
Device name	FI9826W

Figure 3.27

This page you can alter the displayed camera name in the web UI, if you want to change the camera name that displayed in the client, you need to go to Cameras page to re-edit the camera.

#### System Time

This section allows you to configure the settings of the internal system clocks for your camera.



<div>Refresh</div> <div>Save</div>	
<input checked="" type="checkbox"/> Update time from NTP server	
<div>Sync with PC</div>	
NTP server	time.nist.gov
Enter the NTP server	time.nist.gov
Time zone	(GMT)Greenwich mean time; London, Lisbon, Casablanca
System time	2013-10-11 11:32:06
Daylight-saving time	0'

Figure 3.28 (For MJPEG series cameras)

Refresh		Save	
<input checked="" type="checkbox"/> Update time from NTP server		Sync with PC	
NTP server	time.nist.gov		
Enter the NTP server	time.nist.gov		
Time zone	(GMT +08:00)Beijing, Singapore, Taipei		
System time	2013-10-11	07:28:50 PM	
Date format	YYYY-MM-DD		
Time format	12-hour		

Figure 3.29 (For H.264 series cameras)

**Update time form NTP server** : Network Time Protocol will synchronize your camera with an Internet time server. Choose the one that is closest to your camera.

**Sync with PC:** Select this option to synchronize the date and time of the Network Camera with your computer.

**Time Zone:** Select the time zone for your region from the dropdown menu.

**System time:** The administrator can enter the date and time manually.

After setting, click "Save" to validate the configuration.

## Mail

If you want the camera to send emails when motion has been detected, **Mail Service Settings** will need to be configured.

**Enable** the Mail settings.

☐ Enable

SMTP server	
SMTP port	
Transport Layer Security	<div>None ▾</div> <div style="font-size: 0.8em; margin-top: 2px;">Gmail only supports TLS at port 465,supports STARTTLS at port 25/587</div>
Need authentication	Yes ▾
SMTP Username	
SMTP password	
Sender	
reciever1	
reciever2	
reciever3	
reciever4	

Test results

Figure 3.30

**SMTP Server/ Port /Transport Layer Security** Enter SMTP server for sender. **SMTP port** is usually set as 25. Some SMTP servers have their own port, such as 587 or 465, and Transport Layer Security usually is None. If you use Gmail, Transport Layer Security must be set to TLS or STARTTLS and SMTP Port must be set to 465 or 25 or 587, which port you choose should be decided by which Transport Layer Security you select.

**SMTP Username/ password** ID account and password of the sender email address

**Sender** Mailbox for sender must support SMTP

**Receiver** Mailbox for receiver need not support SMTP, you can set 4 receivers

**Save** Click Save to take effect

**Test** Click **Test** to see if Mail has been successfully configured.

Click **Test** to see if Mail has been successfully configured.

If the test fails with one of the following errors after clicking **Test**, **verify** that the information you entered is correct and again select **Test**.

- 1) Cannot connect to the server

- 2) Network Error. Please try later
- 3) Server Error
- 4) Incorrect user or password
- 5) The sender is denied by the server. Maybe the server need to authenticate the user, please check it and try again
- 6) The receiver is denied by the server. Maybe because of the anti-spam privacy of the server
- 7) The message is denied by the server. Maybe because of the anti-spam privacy of the server
- 8) The server does not support the authentication mode used by the device

## User Account

Here you can create users and set privilege, **visitor**, **operator** or **administrator**.

- 1) **For H.264 Series**, the default user accounts are admin ,with a blank password.

NO.	User Name	Right
1	admin	Administrator

☐ Change password

User Name	
Password	
Right	Visitor ▼

Add

Figure 3.31

### Change the password

Firstly, select the account which you want to change the password, then select “Change password”, enter the old password and the new password, lastly click modify to take effect.

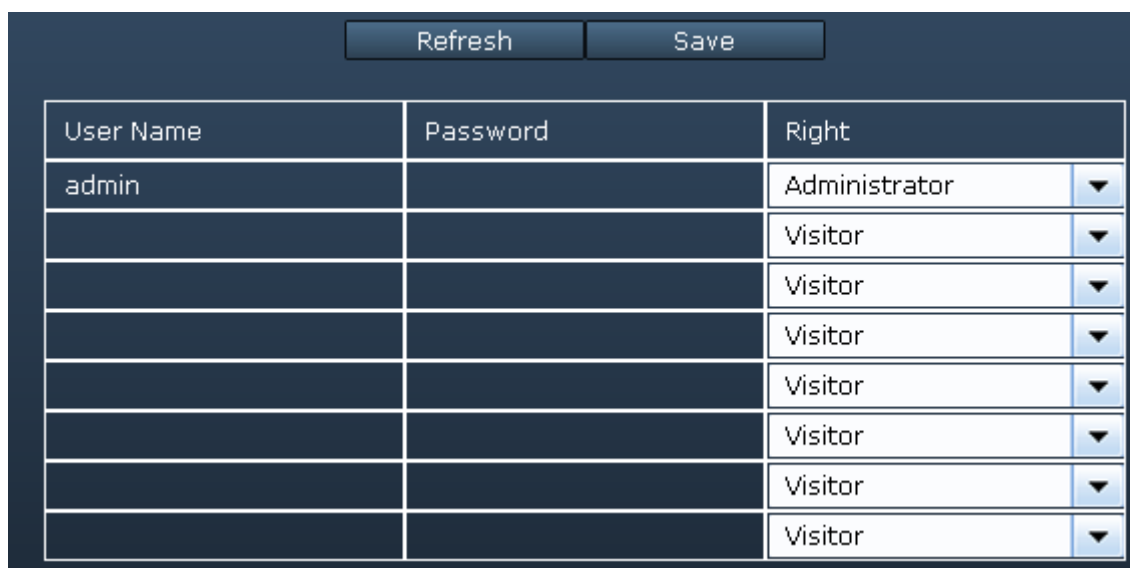
### Add an account

Select one blank column, then enter the new user name, password and privilege, last click Add to take effect. You can see the new added account on the Account list.

### Delete

Select the account which you want to delete, then click Delete button to take effect.

- 2) **For MJPEG series**, please enter the new user name and password, and select the Right, then click Save to take effect.



User Name	Password	Right
admin		Administrator
		Visitor
		Visitor
		Visitor
		Visitor
		Visitor
		Visitor
		Visitor

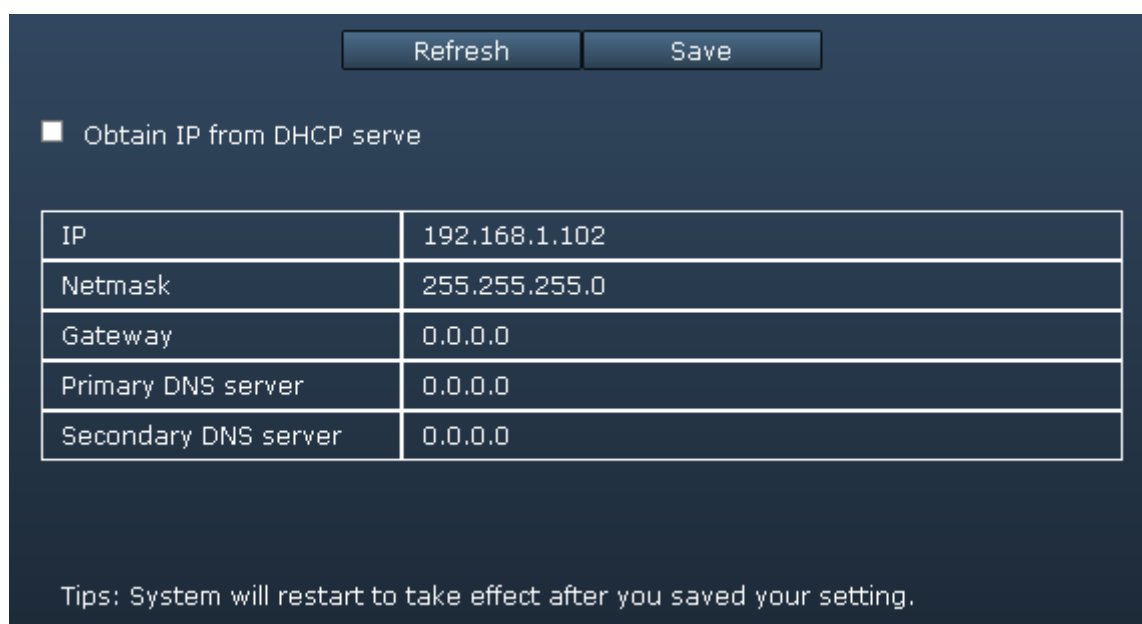
Figure 3.32

### 3.2.3 Network

This section will allow you to configure your camera's IP, DDNS, Wireless Settings and UPnP. For MJPEG cameras, there is other function: ADSL and MSN. For H.264 cameras, here supports PPPoE and Port function.

#### IP

If you want to set a static IP for the camera, please go to **IP** page. Keep the camera in the same subnet of your router or computer.



☐ Obtain IP from DHCP serve

IP	192.168.1.102
Netmask	255.255.255.0
Gateway	0.0.0.0
Primary DNS server	0.0.0.0
Secondary DNS server	0.0.0.0

Tips: System will restart to take effect after you saved your setting.

Figure 3.33

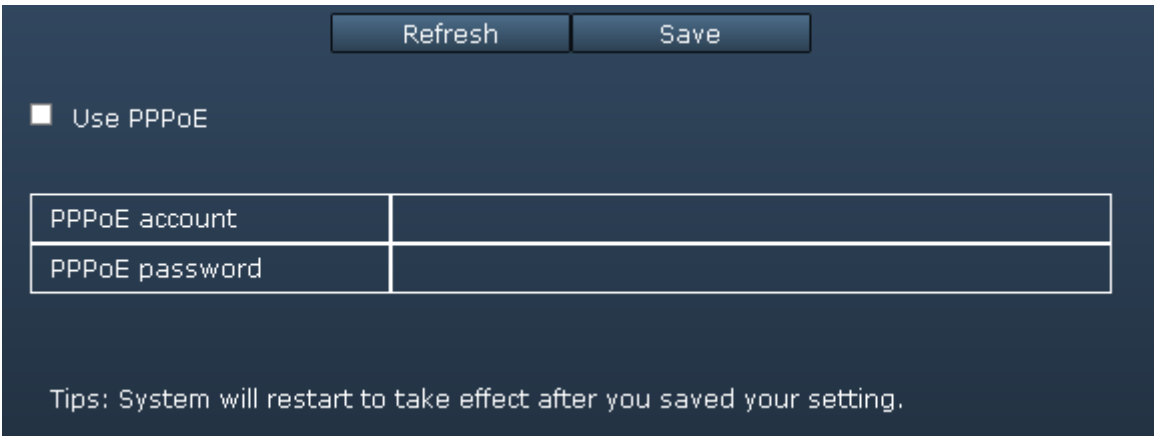
It is recommended that you use the subnet mask, gateway and DNS server from your locally attached PC. If you don't know the subnet mask, gateway and DNS server, you can check your computer's local area connection as follows:

**Control Panel→Network Connections→Local Area Connections → Support→Details.**

For MJPEG cameras, here support Http Port. For H.264 cameras, please go to Port page to set port no. .

### PPPoE(Only for H.264 cameras)

If you are using a PPPoE connection, enable it and enter the User Name and Password for your PPPoE account.



<input type="button" value="Refresh"/>		<input type="button" value="Save"/>
<input type="checkbox"/> Use PPPoE		
PPPoE account		
PPPoE password		
Tips: System will restart to take effect after you saved your setting.		

Figure 3.34

### DDNS

FOSCAM camera has embedded a unique DDNS domain name when producing, and you can directly use the domain name, you can also use the third party domain name.

Refresh Save Restore DDNS to factory

☐ Enable DDNS

Manufacturer's DDNS

Manufacturer's DDNS	cw0130.myfoscam.org
---------------------	---------------------

Third Party DDNS

DDNS server address	None
---------------------	------

- None
- Oray
- 3322
- no-ip
- DynDns

Figure 3.35 (For H.264 series cameras)

For MJPEG cameras, if you select Manufacturer's DDNS as DDNS server address, there will display the DDNS domain name that embedded in the camera.

If you select third party DDNS, such as 3322.org, no-ip, you need to fill in the Domain, DDNS user name and password, then click Save to take effect.

Please make sure the third party DDNS you filling is right.

Refresh Save Restore DDNS to factory

☒ Enable DDNS

Manufacturer's DDNS

Manufacturer's DDNS	cw0130.myfoscam.org
---------------------	---------------------

Third Party DDNS

DDNS server address	3322
Domain	cw0130.3322.org
DDNS user name	cw0130
DDNS password	*****

Figure 3.36 (For H.264 series cameras)

**Restore DDNS to factory:** If you have configured Third Party DDNS successfully, but you want to use Manufacturer's DDNS again, here click this button and start Manufacturer's DDNS Service.



Now you can use `http:// Domain name + HTTP Port` to access the camera via internet.

Take hostname **test09.myfoscam.org** and **HTTP Port no. 88** for example, the accessing link of the camera via internet would be [http:// camera.myfoscam.org:88](http://camera.myfoscam.org:88).

Please make sure the port forwarding is successfully, here we recommend you to do port forwarding manually.

**For example: The camera's LAN IP address is `http://192.168.1.35` , HTTP Port is 88.**

**Firstly**, login the router, goes to the menu of **Port Forwarding** or **Port Trigger** (or named **Virtue Server** on some brands of router). Take **Linksys** brand router as an example, Login the router, and goes to **Applications & Gaming->Single Port Forwarding**.

**Secondly**, Create a new column by LAN IP address & HTTP Port No. of the camera within the router showed as below.

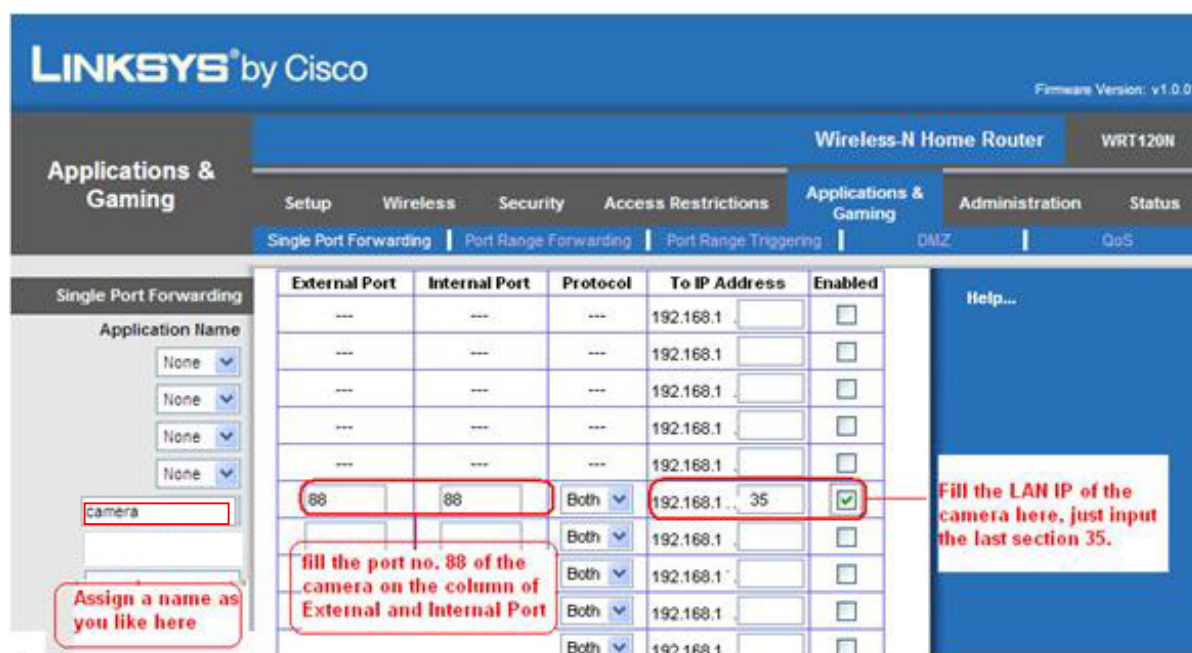


Figure 3.37

## WIFI

This section will show you how to do wireless settings for your camera.

### Step 1:

Click the **Scanning** button and the camera will detect all wireless networks around the area. It should also display your router in the list .

Refresh Save

WIFI list Scanning

NO.	SSID	Encryption	Signal strength
1	TP-LINK_51BAB4	WPA2	100
2	MERCURY_kevin	WPA2	99
3	cisco	WPA2	73
4	foscam-wifi	WPA2	68
5	V_CPA1	WPA	57
6	Sean	WPA2	52
7	HAME_A1_36e9	WPA	47
8	Tian Jian Wei Sai 1905	WPA2	31
9	ITEE	WPA2	31
10	zzzbbblll	WPA2	26

SSID  
Encryption None

Click Previous or Next to see other wireless networks devices if there are more than 10, you can also fill in one page number and click GO button .

Pages:3 Previous Next GO

Figure 3.38

**Step 2:** Click the SSID (name of your router) in the list, the corresponding information related to your network, such as the SSID and the encryption, will be filled into the relevant fields automatically. You will only need to fill in the password of your network. Make sure that the SSID, Encryption and the password you filled in are exactly the same for your router.

Refresh Save

WIFI list Scanning

NO.	SSID	Encryption	Signal strength
1	TP-LINK_51BAB4	WPA2	100
2	MERCURY_kevin	WPA2	99
3	cisco	WPA2	73
4	foscam-wifi	WPA2	68
5	V_CPA1	WPA	57
6	Sean	WPA2	52
7	HAME_A1_36e9	WPA	47
8	Tian Jian Wei Sai 1905	WPA2	31
9	ITEE	WPA2	31
10	zzzbbblll	WPA2	26

SSID TP-LINK\_51BAB4  
Encryption WPA2  
Shared key \*\*\*\*\*

Pages:3 Previous Next GO

Figure 3.39

**Step 3:** Please click on the **Save** button after all settings have been entered and disconnect the network cable. Never shut down the power of the camera until the IP camera is able to connect to the wireless

network.

Wait about 1 minute, the camera should obtain a wireless connection, and the LAN IP of the camera will show again on the window of the IP Camera Tool. The IP address may have changed after the camera receives a wireless connection; we recommend setting a static local IP address.

## UPnP

The default UPnP status is closed. You can select the checkbox and open UPnP, then the camera's software will be configured for port forwarding. Back to the "Device Status" panel, you can see the UPnP status:

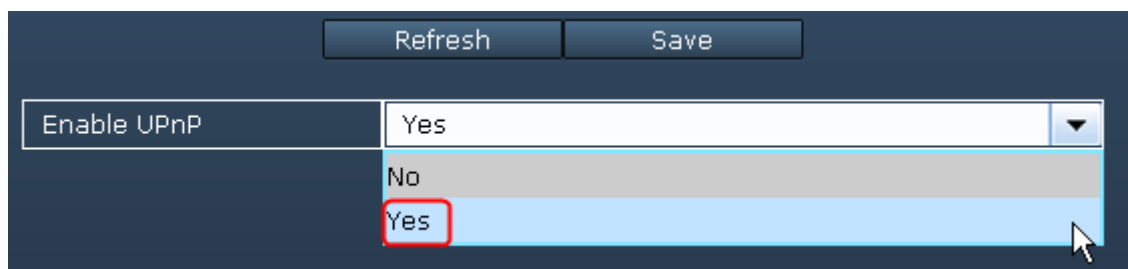


Figure 3.40

There may be issues with your routers security settings, and sometimes may error. We recommend you configure port forwarding manually on your router (Figure 3.37).

## Port(Only for H.264 cameras)

H.264 camera supports HTTP Port and Media Port. The Media port is used to view the camera's video stream, HTTP Port is used to access the camera remotely. If you want to access the camera and view the video, the Media Port and the HTTP Port must both be configured correctly.

**HTTP port / Media port:** The ports can be assigned with other port number between 1 and 65535. But make sure they can't be conflict with other existing ports like 25, 21.

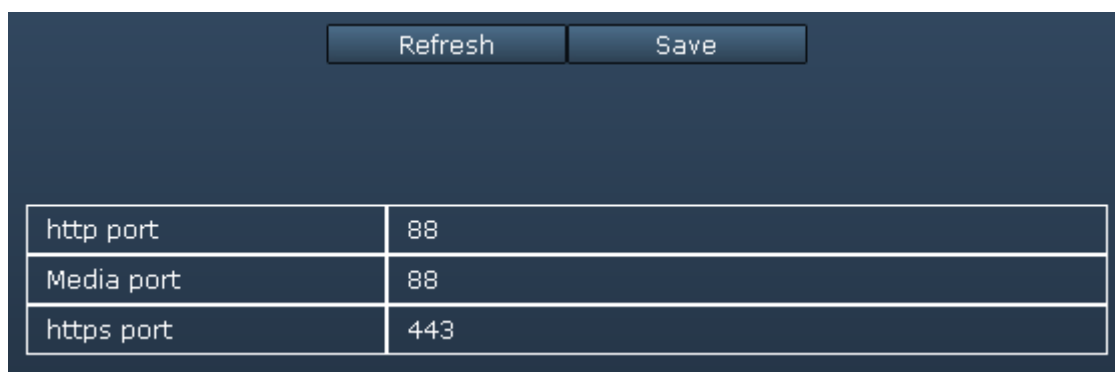


Figure3.41

## ADSL (Only for MJPEG cameras)

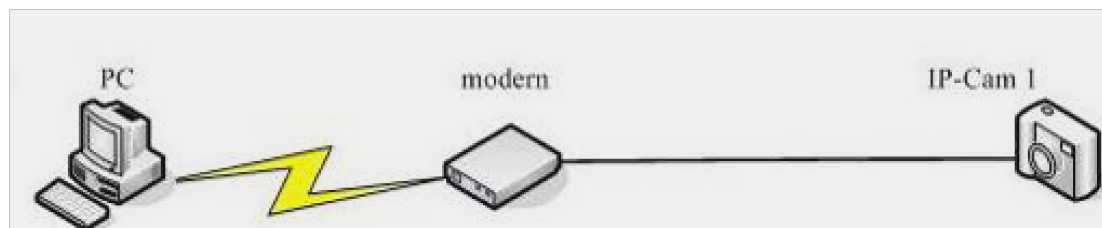


Figure 3.42

If you are connecting the camera directly to a ADSL modem, you can do ADSL settings with your ADSL account & password provided by the ISP, then make the camera connected to the network.

Figure 3.43

## MSN(Only for MJPEG cameras)

If you want the camera send its current internet IP address to you or your friends, please set MSN settings.

User Name	Password
foscam31@hotmail.com	*****
test06@hotmail.com	
foscam16@hotmail.com	

**Fill in the user and password of the MSN ID you applied for your camera .**

**MSN ID in this list can chat with the camera .**

Figure 3.44

Click Save and go to the “Device Status” screen and verify the MSN settings are succeed.

When the MSN ID in the Friends list login the MAN, he can chat with camera. For example:

Foscam13(this account contained in the Friends list) log in MSN, and double click the camera’s account (foscam31), then enter “url?”, the camera will send it’s current IP address to you.

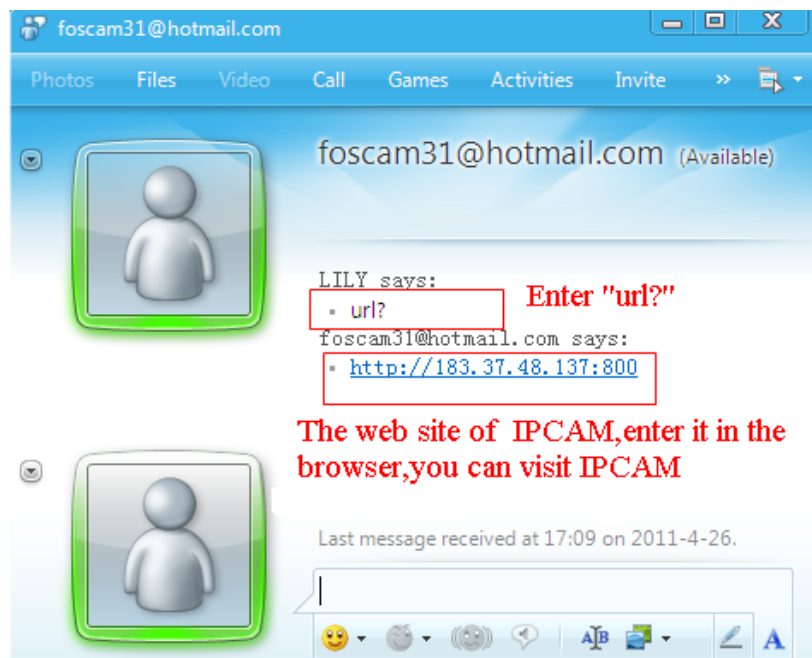


Figure 3.45

**Note:** Create a new MSN account for the camera, do not use the same MSN account as you would like to chat with your friends. When the camera login uses the MSN account, this account cannot be used for anything else when the camera works.

### 3.2.4 Video

Only H.264 series camera supports video settings.

This section allows you to configure Video stream settings, On screen display and Snapshot settings.

#### Encode param

Refresh		Save	
Stream type	0		
Resolution	720P		
Bit rate	2M		
Frame rate	30		
Key frame interval	30		

Figure 3.46

**Stream type:** There are four types to identify different streams you have set.

**Resolution:** The camera supports two types: 720P, VGA. The higher the resolution is, the clearer video will become. But the code flux will become larger too, and it will take up more bandwidth.

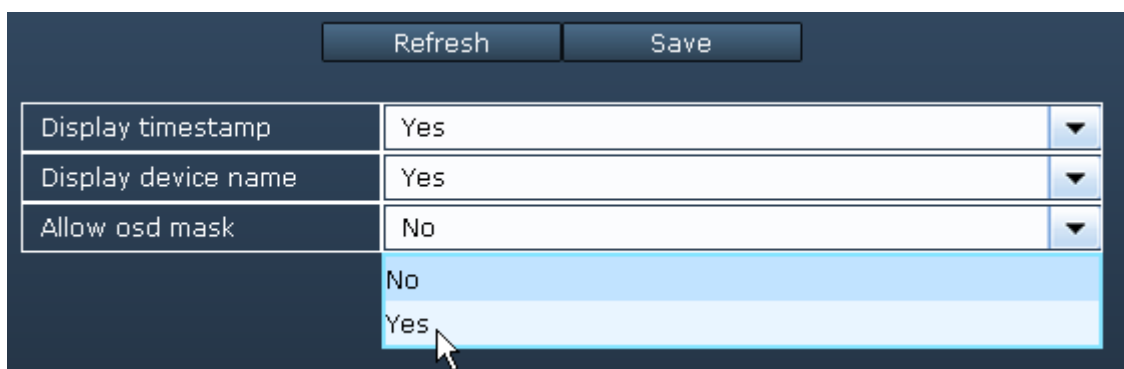
**Bit rate:** Generally speaking, the larger the bit rate is, the clearer video will become. But the bit rate configuration should combine well with the network bandwidth. When the bandwidth is very narrow, and bit rate is large, that will lead to video can not play well.

**Frame rate:** Note that a larger frame size takes up more bandwidth. When the video format is 50Hz, the maximum frame rate is 25 fps. When the video format is 60Hz, the maximum frame rate is 30 fps. You should lower frame rate when the bandwidth is limited. Normally, when the frame rate above 15, you can achieve fluently video.

**Key Frame Interval:** The time between last key frame and next key frame. The shorter the duration, the more likely you will get a better video quality, but at the cost of higher network bandwidth consumption.

## OSD

This page is used to add timestamp and device name on the video.



Refresh Save	
Display timestamp	Yes
Display device name	Yes
Allow osd mask	No
	No
	Yes

Figure 3.47

**Display timestamp:** There are two options: Yes or NO. Select Yes and you can see the system date on the video,

**Display camera name:** There are two options: Yes or NO. Select Yes and you can see the device name on the video,

**Allow osd(on screen display) mask :** There are two options: Yes or NO. Select yes and draw a mask area on the video, the mask area will be black on the video.

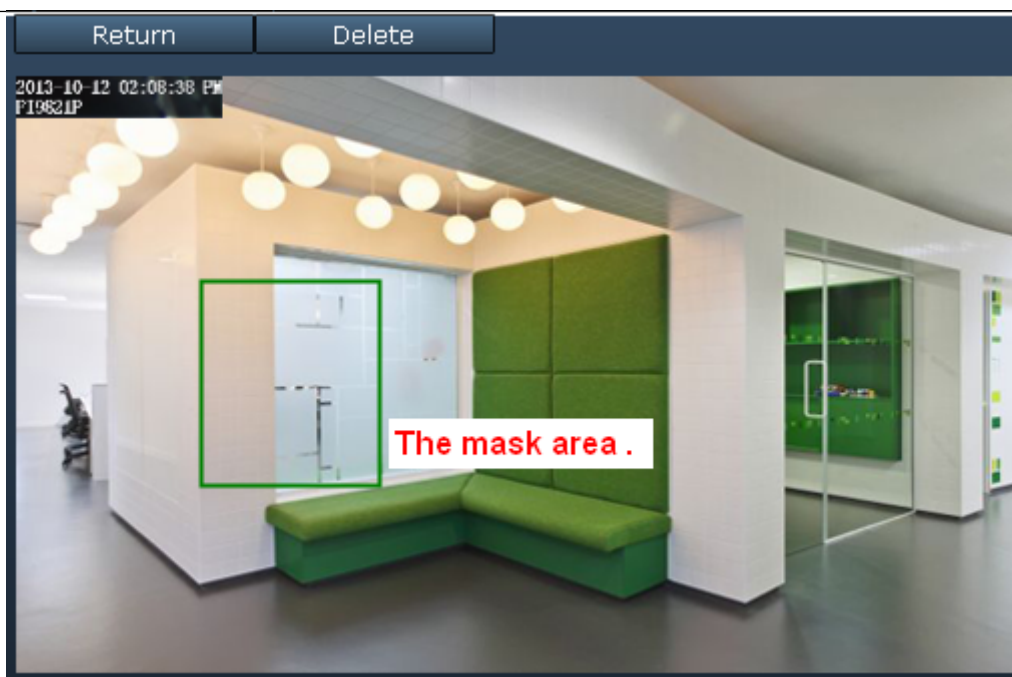


Figure 3.48

Click **Return** button and return to the OSD page, click Save to take effect.

Back to the surveillance window, you can see the mask area as the following picture:

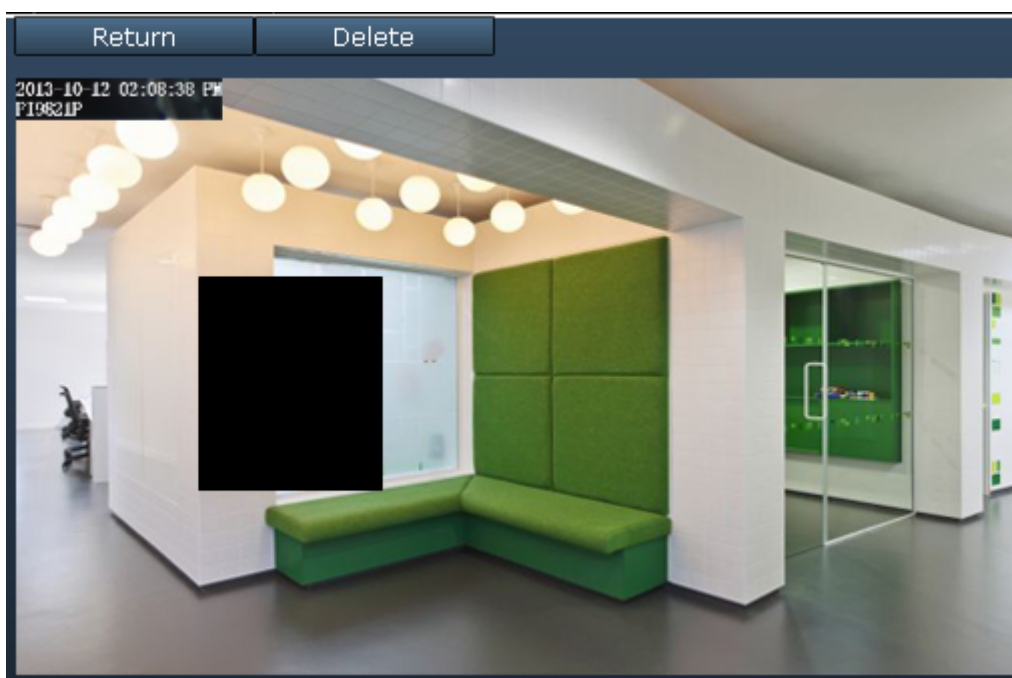


Figure 3.49

## capture

On this page you can set the snapshot pictures' image quality and the storage path.



The screenshot shows a web interface with a dark blue header bar containing two buttons: 'Refresh' and 'Save'. Below the header is a table with two rows. The first row has a label 'Image Quality' and a value 'Middle' with a dropdown arrow. The second row has a label 'Save path' and a value 'FTP' with a dropdown arrow.

Refresh Save	
Image Quality	Middle ▼
Save path	FTP ▼

Figure 3.50

**Image Quality:** Low, Middle and High. The higher the quality, the picture will be clearer.

**Save To:** FTP or SD Card. If you have done FTP and Alarm settings, when alarming, the camera will snap pictures to the FTP automatically. If select SD Card as the save path, make sure the camera has inserted in the SD card.

### 3.2.5 Alarm

IP Camera supports **Motion Detection Alarm**, when the motion has been detected, it will send emails or upload images to FTP.

#### For MJPEG Cameras

MJPEG cameras support motion alarm and sound alarm, if you want to use sound alarm, please make sure the camera has built-in microphone or connected with outer sound pick-up device.



Setting	Value	Indicator
Enable	<input checked="" type="checkbox"/>	1
Sensitivity	5	2
Motion Compensation	<input checked="" type="checkbox"/>	3
Sound detection alarm	<input checked="" type="checkbox"/>	4
Sound detection sensitivity	5	5
Send Mail	<input checked="" type="checkbox"/>	
Snap picture	<input checked="" type="checkbox"/>	6
Capture interval	0	
Scheduler	<input checked="" type="checkbox"/>	7

Select all Clear all

	0	1	2	3	4	5	6	7	8	9	10	11	12	13	14	15	16	17	18	19	20	21	22	23
MON																								
TUE																								
WED																								
THU																								
FRI																								
SAT																								
SUN																								

Figure 3.51

1---- Enable alarm function

2---- The larger the number, the higher the motion sensitivity will be.

3---- Select this option to reduce false alarms when light changes.

4----- If you want to do Sound Detection Alarmed,select the checkbox.

5---- The larger the number, the higher the sound sensitivity will be.

6--- Alarm indicators.

### 1) Camera will send emails when motion/sound is activated.

If you want to receive images when motion is detected, you must set **Mail Service Settings** first. Then select the checkbox after Send Mail.

### 2)Snap Picture

When motion or sound is detected, the camera will snap pictures to you.

**Capture interval:** The interval time between two pictures.

## 7---Alarm Scheduler

Please select “Select all” if you want the camera alarm at any time when motion/sound is detected. Of course, you can select the alarm scheduler manually.

8---- Click **Save** to take effect

## For H.264 Cameras

Refresh Save Locale

☒ Enable 1

Sensitivity Middle 2

Trigger interval 10s 3

Linkage

☒ Ring

☒ Send Mail

☒ Snap picture Capture interval 2s 4

☒ Record

Select all Clear all 5

	0	1	2	3	4	5	6	7	8	9	10	11	12	13	14	15	16	17	18	19	20	21	22	23
MON																								
TUE																								
WED																								
THU																								
FRI																								
SAT																								
SUN																								

Figure 3.52

To enable motion detection, follow the steps below:

### Step 01: Enable Motion detection

**Step 02: Sensitivity**---- It supports three modes: Low, Middle and High. The higher the sensitivity, the camera will be more easily alarmed. Select one motion sensitivity.

**Step 03: Trigger interval**--- The interval time between two motion detections. Here supports 5s/6s/7s/8s/9s/10s/11s/12s/13s/14s/15s. Select one interval time.

**Step 04: Select the alarm indicator**

---

## There are four alarm indicators:

### A Ring

There is an embedded speaker inside the camera, so if you select **Ring**, when the motion has been detected, the people around the camera will hear beep alarm sound.

### B Send E-mail

If you want to receive alarm emails when motion is detected, you must select Send E-mail and set **Mail Settings** first. The alarm email cannot contain the alarm picture if you have not selected Take Snapshot.

### C Take Snapshot

If you select this checkbox, when the motion has been detected, the camera will snap the live view window as a still picture and load it to the FTP. Make sure you have set FTP and set FTP as the storage path in **Video->Snapshot settings** panel.

If you select Send Email, at the same time the picture will be send to you as an attachment.

**Capture interval:** The interval time between two pictures.

### D Record

If you select this checkbox, when the motion has been detected, the camera will record automatically and store the record files to the SD Card. Make sure the camera has inserted SD card and you have set the SD card as the Alarm record files storage path, please go to **Record—> Storage Path** page to verify this settings.

The default alarm record time is 30s and pre-alarm record time is 5s, please go to **Record—> Alarm Record** page and change the alarm time settings.

## Step 05: Alarm Schedule

Please select “Select all” if you want the camera alarm at any time when motion/sound is detected. Of course, you can select the alarm scheduler manually.

## Step 06: Click Save button to take effect.

When the motion has been detected during the detection time in the detection area, the camera will alarm and adopt the corresponding alarm indicators.

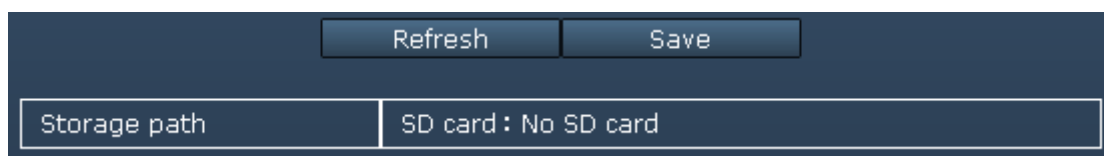
## 3.2.6 Record

This section will allow you to change the record files storage path and the record time. Only H.264 supports this function.

### For H.264 cameras

#### Storage path

The default alarm storage path is SD card. Make sure your camera has inserted in SD card.

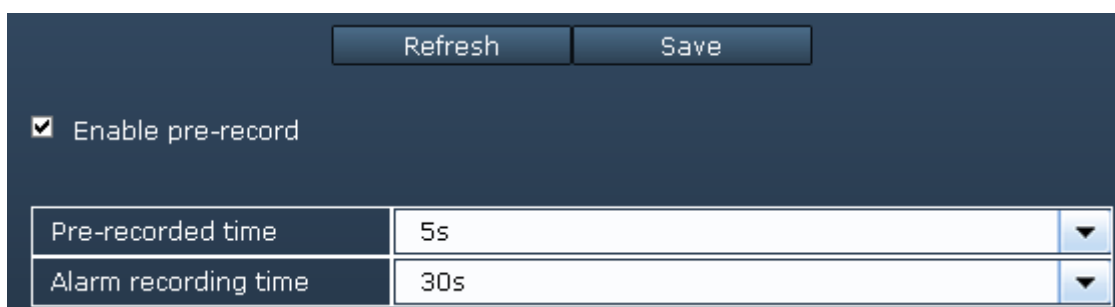


Storage path	SD card : No SD card
--------------	----------------------

Figure 3.53

### Alarm record

This page you can change the Pre-record time and Alarm record time.



Refresh Save	
<input checked="" type="checkbox"/> Enable pre-record	
Pre-recorded time	5s ▼
Alarm recording time	30s ▼

Figure 3.54

The default Pre-recorded time is 5s and the alarm record time is 30s, you can change another time, click Save button to take effect.

### 3.2.7 PT

If you camera has connected with cradle head, here you can use PT (pan / tilt).

#### For MJPEG Camera

You can set pan/tilt speed. Normally, PT speed is 3. The larger the setting number, the lower speed. Don't enable the checkbox "disable preset" if you want to use the function of preset, it will be effective after you reboot device.

<div>Refresh</div> <div>Save</div>	
Disable preset	<input checked="" type="checkbox"/>
Go to center on boot	<input checked="" type="checkbox"/>
PT speed	3 ▼
Upward patrol speed	3 ▼
Downward patrol speed	3 ▼
Leftward patrol speed	3 ▼
Rightward patrol speed	3 ▼
Patrol rounds horizontal	2 ▼
Patrol rounds vertical	2 ▼

Figure 3.55

**Patrol rounds horizontal:** Set the round between 1 and 10, then click Submit. Back to surveillance window. Click the Horizon patrol button, the camera will patrol the rounds horizontally you set and then stop if you don't click Stop horizon patrol button. For example, you set 4 for the patrol rounds. Click submit and back to surveillance window. Click the Horizon patrol button and do not click the Stop horizon patrol button, the camera will patrol 4 rounds and then stop automatically.

**Patrol rounds vertical:** Set the round between 1 and 10, then click submit. Back to surveillance window. Click the Vertical patrol button, the camera will patrol the rounds vertically you set and then stop if you don't click Stop vertical patrol button.

## For H.264 Camera

### PT Speed

There are five PT speed types: very fast, fast, normal, slow and very slowly. Select the desired PTZ speed type and click save button.

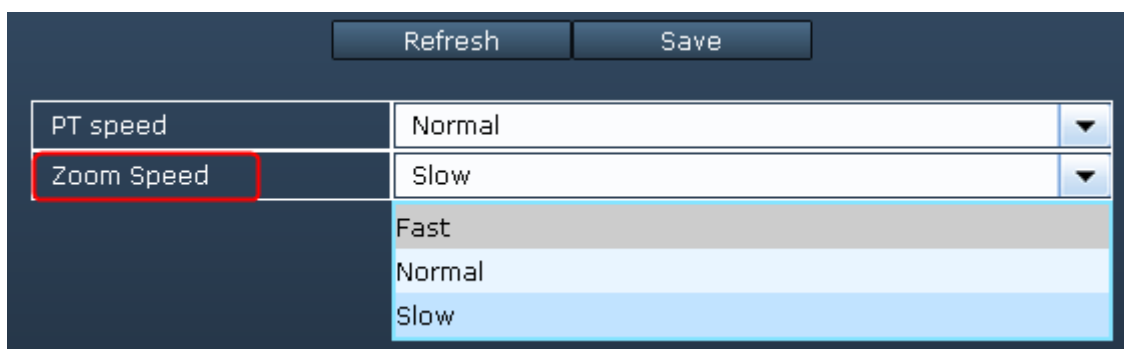
<div>Refresh</div> <div>Save</div>	
PT speed	Normal ▼
Zoom Speed	<div>Very fast</div> <div>Fast</div> <div>Normal</div> <div>Slow</div> <div>Very slow</div>

Figure 3.56

### Zoom Speed

There are three Zoom speed types: fast, normal, slow . Select the desired Zoom speed type and click save

button.



Refresh Save	
PT speed	Normal
Zoom Speed	Slow
	Fast
	Normal
	Slow

Figure 3.57

### Cruise Track

This section explains how to add/ delete/ alter one cruise track.

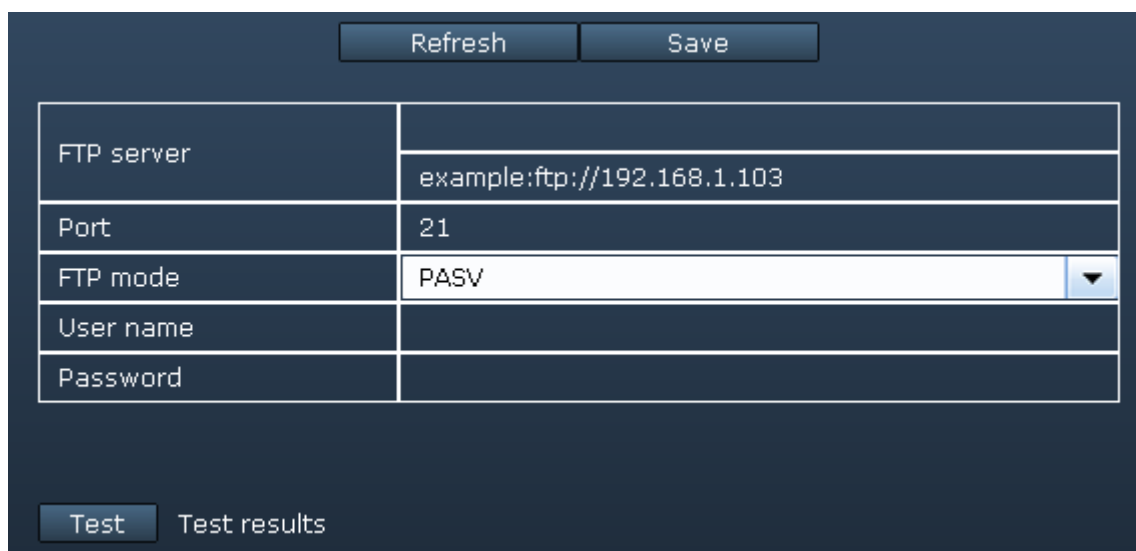
There are two default cruise tracks: Vertical and Horizontal.

**Vertical:** The camera will rotate from up to down

**Horizontal:** The camera will rotate from left to right.

### 3.2.8 Path Settings

If you want to upload record files and images to your FTP server, you can set **FTP Settings**.



Refresh Save	
FTP server	example:ftp://192.168.1.103
Port	21
FTP mode	PASV
User name	
Password	

Test Test results

Figure 3.58 (For H.264 series cameras)



Refresh Save	
FTP Server	
Port	21
User name	
Password	
FTP Upload Folder	
FTP mode	PASV ▼
Upload Image Now	<input type="checkbox"/>
Upload Interval (Seconds)	0
Enable Set Filename	<input type="checkbox"/>
Filename	
Test Test results Please set first, and then test.	

Figure 3.59 (For MJPEG Cameras)

**FTP server:** The FTP address.

**Port:** Default is port 21. If changed, external FTP client program must change the server connection port accordingly.

**FTP Mode:** Here supports two modes: PORT and PASV.

**Username/password:** The FTP account and password.

### For MJPEG Camera, here also support the following function:

**Upload Image Now:** This option will upload images continuously when you enable the checkbox

**Enable Set Filename:** When you enable this option the uploaded image will be named according to the filename you enter. The next image will overwrite the filename of the previous image. Hence there will only be one image, the last uploaded.

**Filename:** See the above option.

**Note:** You cannot change the name of the alarm image.

Click **Save** to take effect.

Click **Test** to see if FTP has been successfully configured.

## 3.2.9 Firewall

Only H.264 series cameras allow to use this function.

**Shenzhen Foscam Intelligent Technology Co., Limited**

**Tel: 86 755 2674 5668 Fax: 86 755 2674 5168**

This section explains how to control the access permission by checking the client PC's IP addresses. It is composed of the following columns: **Block access from these IP addresses** and **Only allow access from these IP addresses**.



IP filter	
IP1	
IP2	
IP3	
IP4	
IP5	
IP6	
IP7	
IP8	

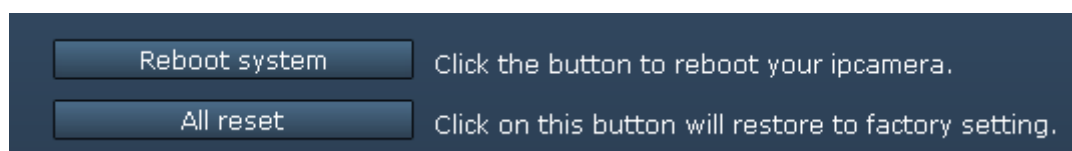
Figure 3.60

Enable firewall, If you select **Only allow access from these IP addresses** and fill in 8 IP addresses at most, only those clients whose IP addresses listed in the **Only allow access from these IP addresses** can access the Network Camera. If you select **Block access from these IP addresses**, only those clients whose IP addresses are in the IP list cannot access the Network Camera.

Click **Save** to take effect.

### 3.2.10 System

In this panel, you can backup/restore your camera settings, upgrade the firmware to the latest version, restore the camera to default settings and reboot the device.



<b>Reboot system</b>	Click the button to reboot your ipcamera.
<b>All reset</b>	Click on this button will restore to factory setting.

Figure 3.61

#### Reboot system:

Click **Reboot System** to reboot the camera. This is similar to unplugging the power to the camera.

#### All reset:

Click this button and all parameters will return to factory settings if selected. This is similar to press the Reset button on the bottom of the camera.



## 3.3 Record and Alarm

This section explains how to do record for client and set the storage path for logs, pictures and record files.

### 3.3.1 Record and Alarm

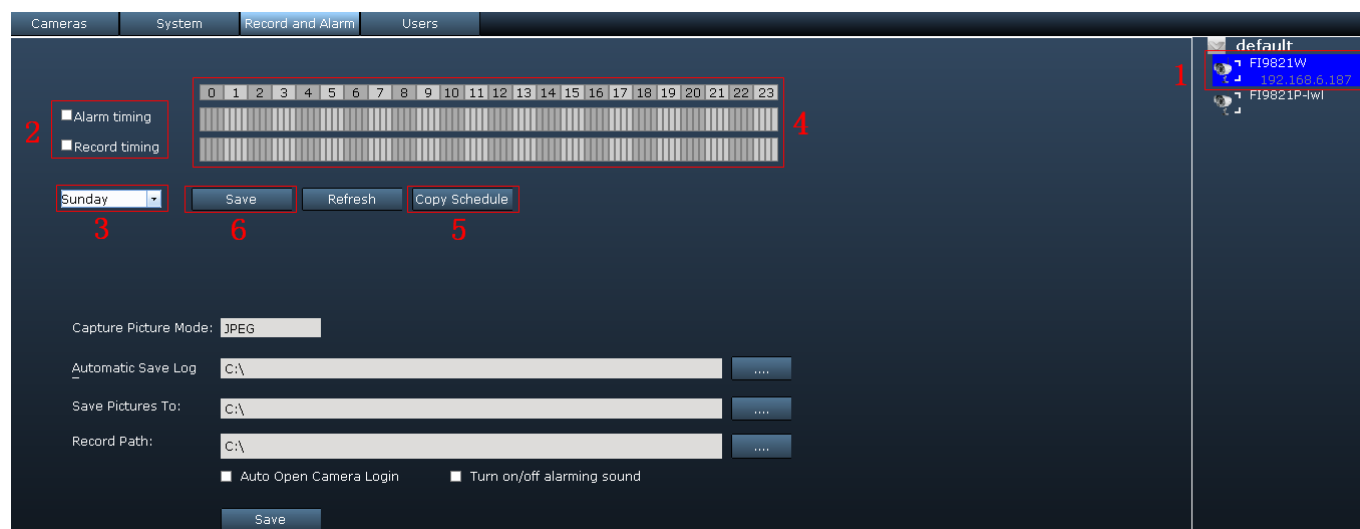


Figure 3.62

- 1) Select one camera just by double clicking the camera icon in the camera list
- 2) Select the checkbox before Alarm timing or Record timing

**Alarm timing** – When the motion has been detected, the client will record automatically, and you can see a red dot in the surveillance window of the client

**Record timing—Plan record scheduler** The client will record manually during the record time range you have set, and you can see a blue dot in the surveillance window of the client

**Note:** For H.264 series cameras, here cannot supports Alarm timing.

- 3) Select one day
- 4) Set the Alarm or record timing
- 5) Copy the time set to the other days of the week
- 6) Click **Save** to take effect

Now you can set alarm or plan record for each day by the same way.

The default storage path of record files is C disk,. You can change the path in this window.

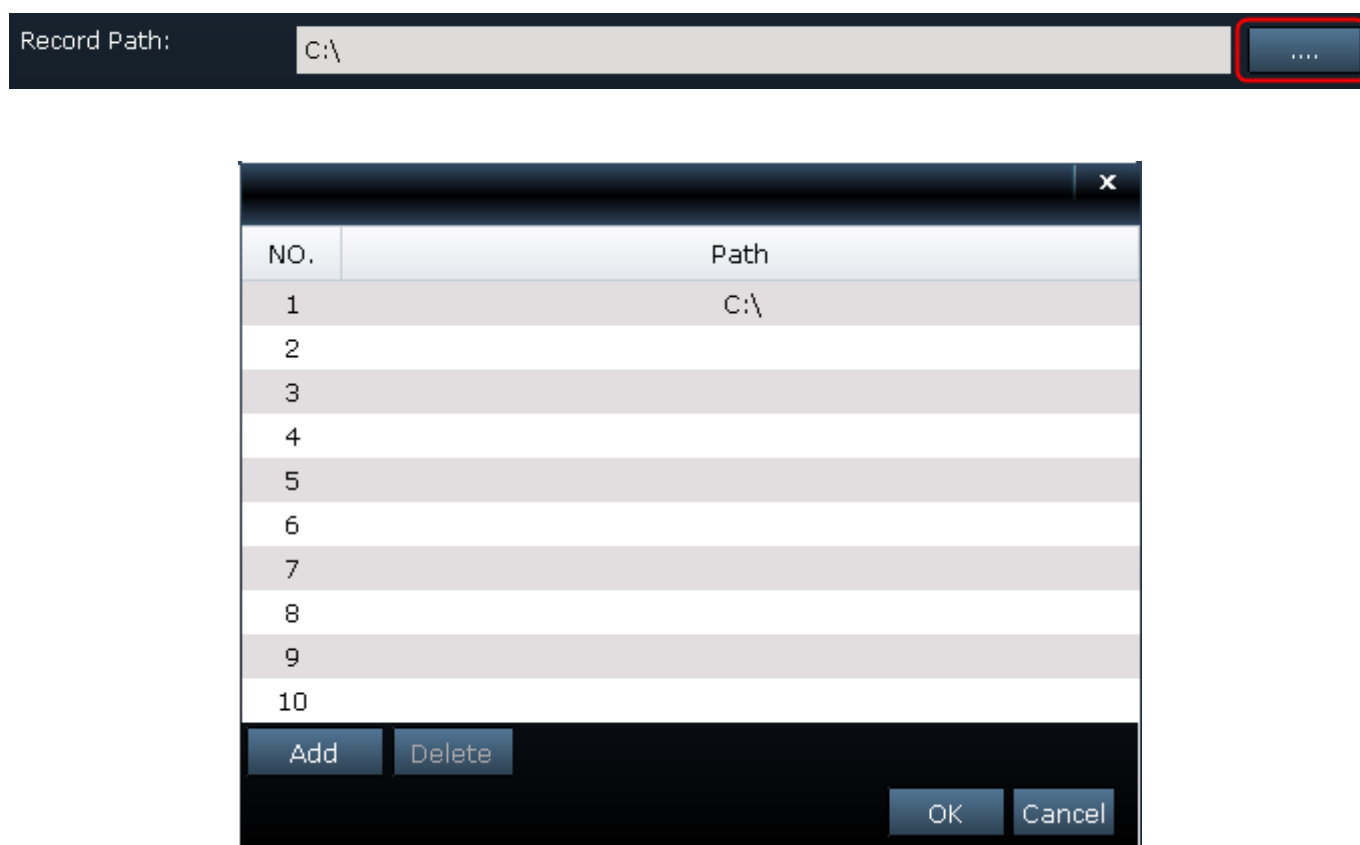


Figure 3.63

When the camera alarmed, you can see a red dot in the live window:

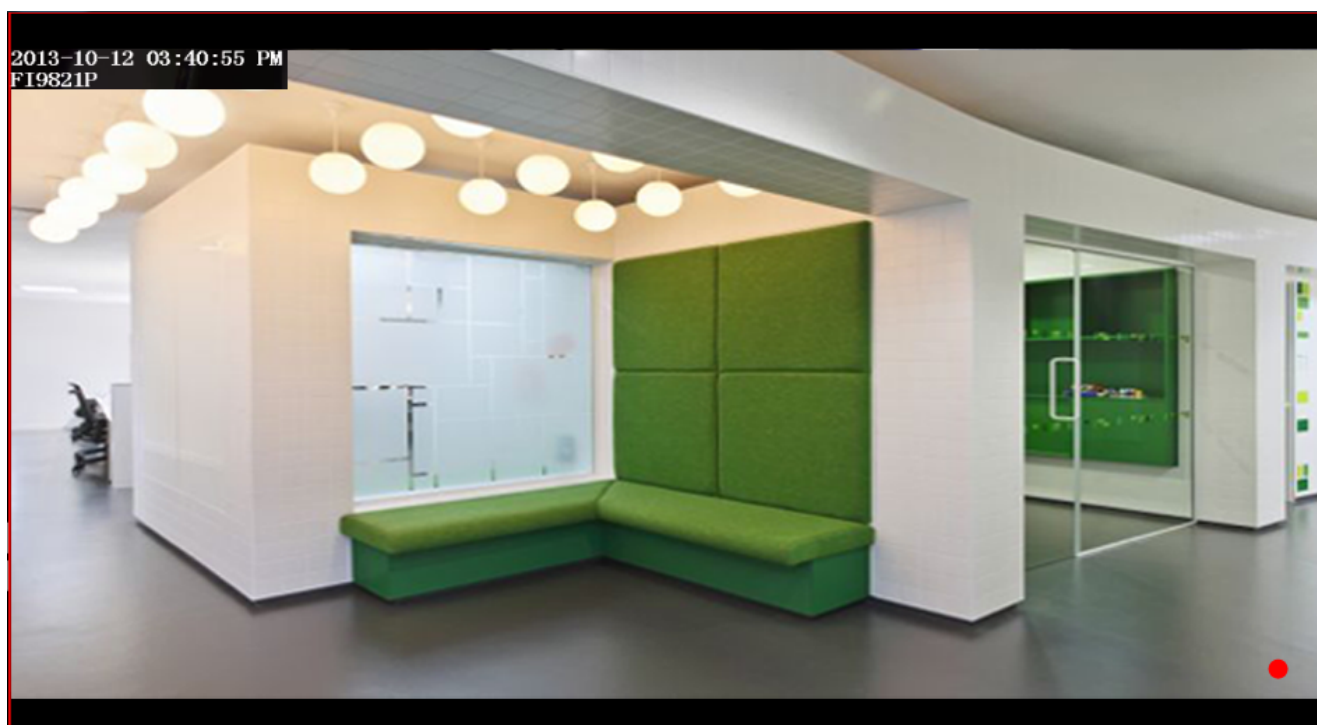


Figure 3.64

When the camera is doing plan recording, you will see a blue dot in the live window:

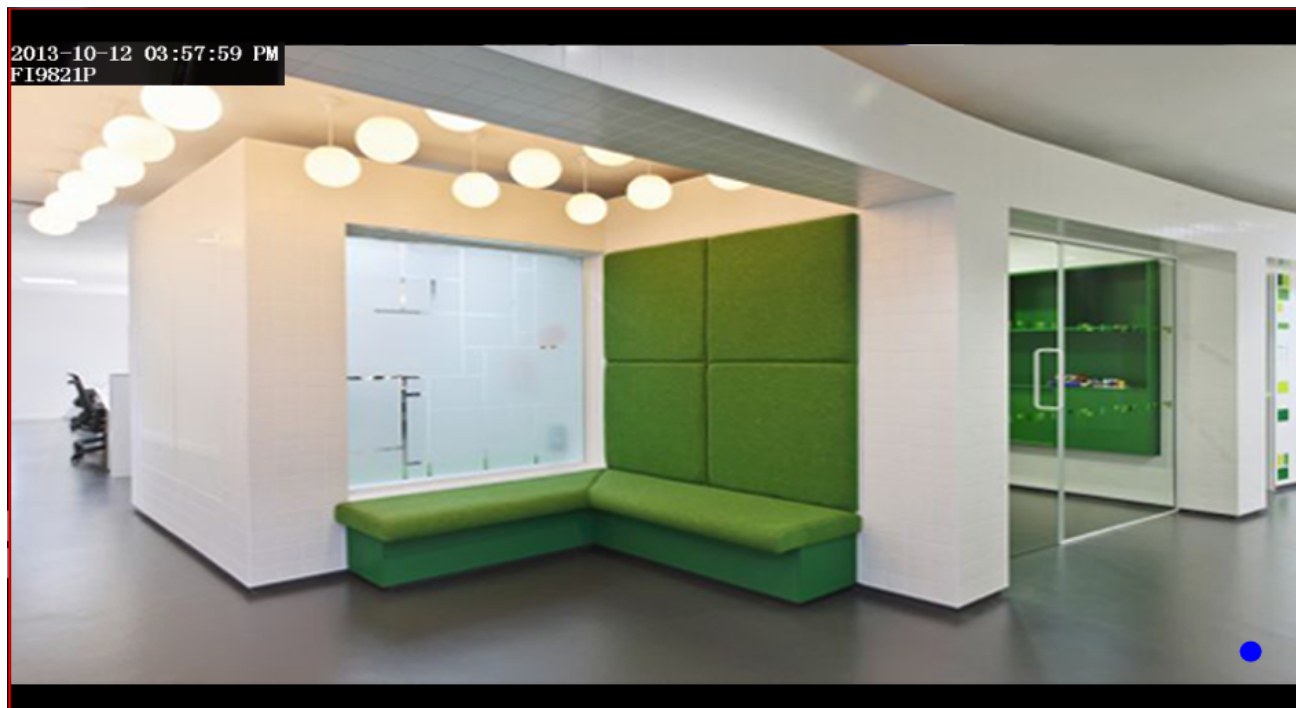


Figure 3.65

**NOTE:**

- 1) The default storage path of recording files is F disk, when the current remaining space of disk is less than 256M, the oldest recording files will be deleted automatically.
- 2) The alarm time you set in the camera web UI has much relation with the alarm time you set for the client. If you have not set alarm time in the camera web UI, the client will not alarm anytime.

### 3.3.2 Storage path and others

In the Record and Alarm page, you can set storage path and other settings for the client.

Capture Picture Mode:	JPEG	
Automatic Save Log	C:\	....
Save Pictures To:	C:\	....
Record Path:	C:\	....
<input type="checkbox"/> Auto Open Camera Login		
<input type="button" value="Save"/>		

Figure 3.66

**Capture Picture Mode:** The default capture picture type is JPEG, and you can not change it here.

**Automatically Save Log :** The storage path of log history.

**Save Pictures To:** The storage path of the snapshot pictures.

**Record Path:** The storage path of record files (manually recording files, plan recording files and alarm recording files).

### 3.4 Users

Here you can create users and set permission levels for client, **visitor**, **operator** or **administrator**.

NO.	User Name	Right
1	admin	Administrator

☐ Change password

User:

Password:

Permissions:

Figure 3.67

#### Change the Password

Select one existent account, select **Change password** and enter the new password then click Edit to take effect.

#### Create a new account

Enter the new user, password and permissions , then click Add to take effect.

#### Delete one existent account

Select the account you want to delete, then click Delete button to take effect.

## 4 Play back

This section explains how to search and play back the record files of the client or play other videos.

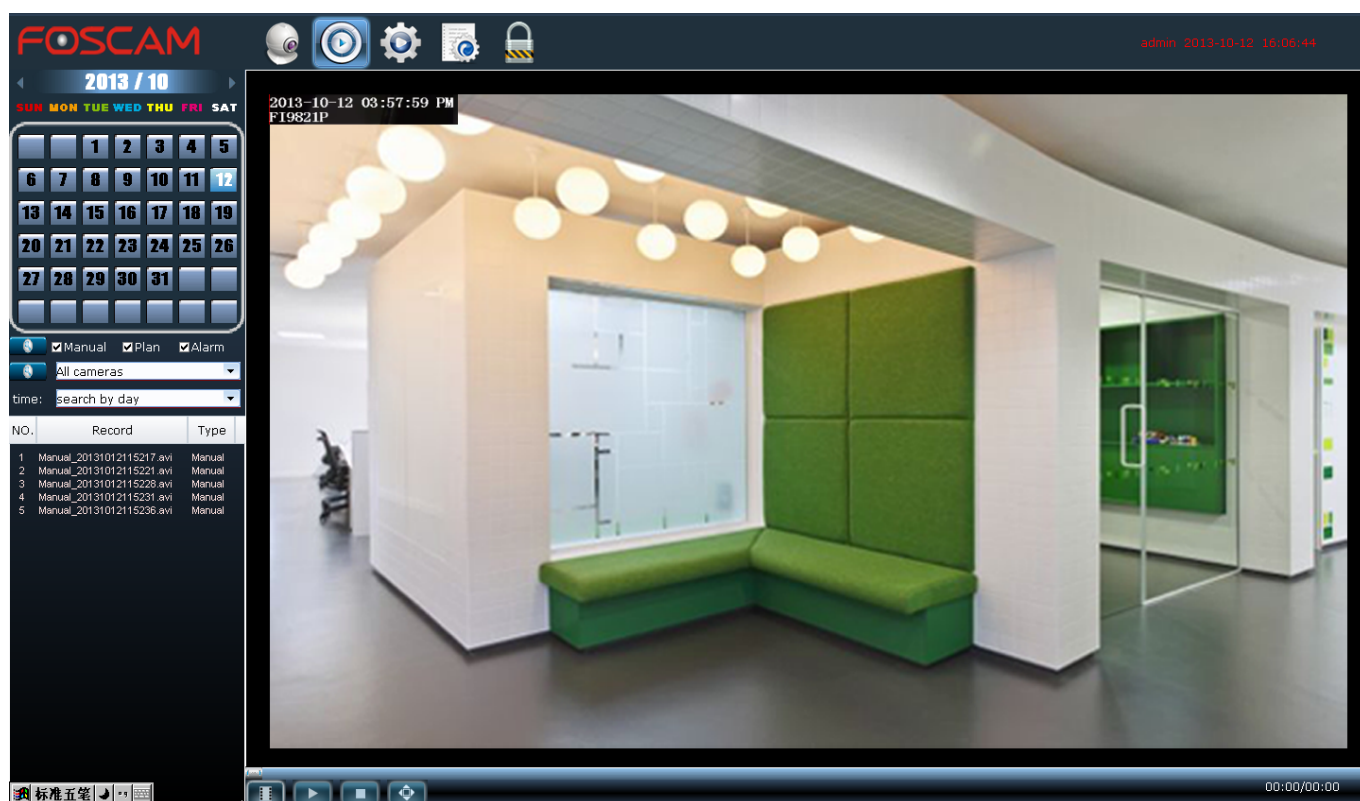


Figure 4.1

**Step 1:** Select the date: year-month-date.

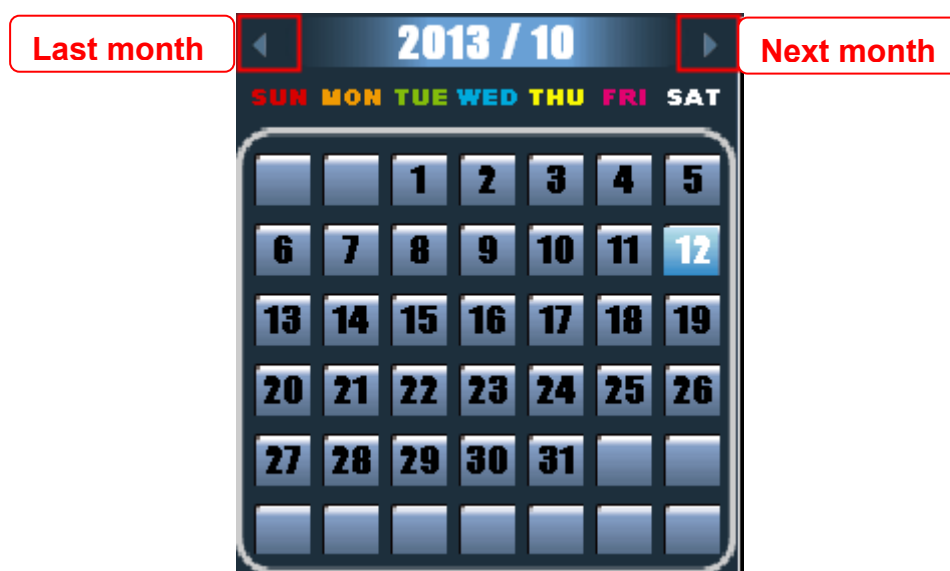
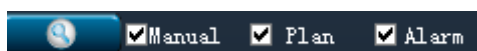


Figure 4.2

**Step 2:** Select the searched types of recording files then click Search button.



Here supports three types of record files:

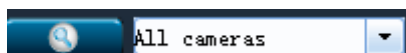
**Manual:** Manually record files.

**Plan:** The plan record files.

**Alarm:** The alarm record files.

**Search:** Search the record files which satisfy the corresponding conditions.

**Step 3:** Select the camera's IP which you want to playback the record files.



**Step 4:** You will see all record files that satisfy the conditions.

NO.	Record	Type
1	Manual_20131012115217.avi	Manual
2	Manual_20131012115221.avi	Manual
3	Manual_20131012115228.avi	Manual
4	Manual_20131012115231.avi	Manual
5	Manual_20131012115236.avi	Manual

**Step 5:** Select one record file and play it.

Select one record file just by clicking the record file name, then click Play button.

There is a button bar blow the play back window.



: Search one video files manually.



: Play one record file



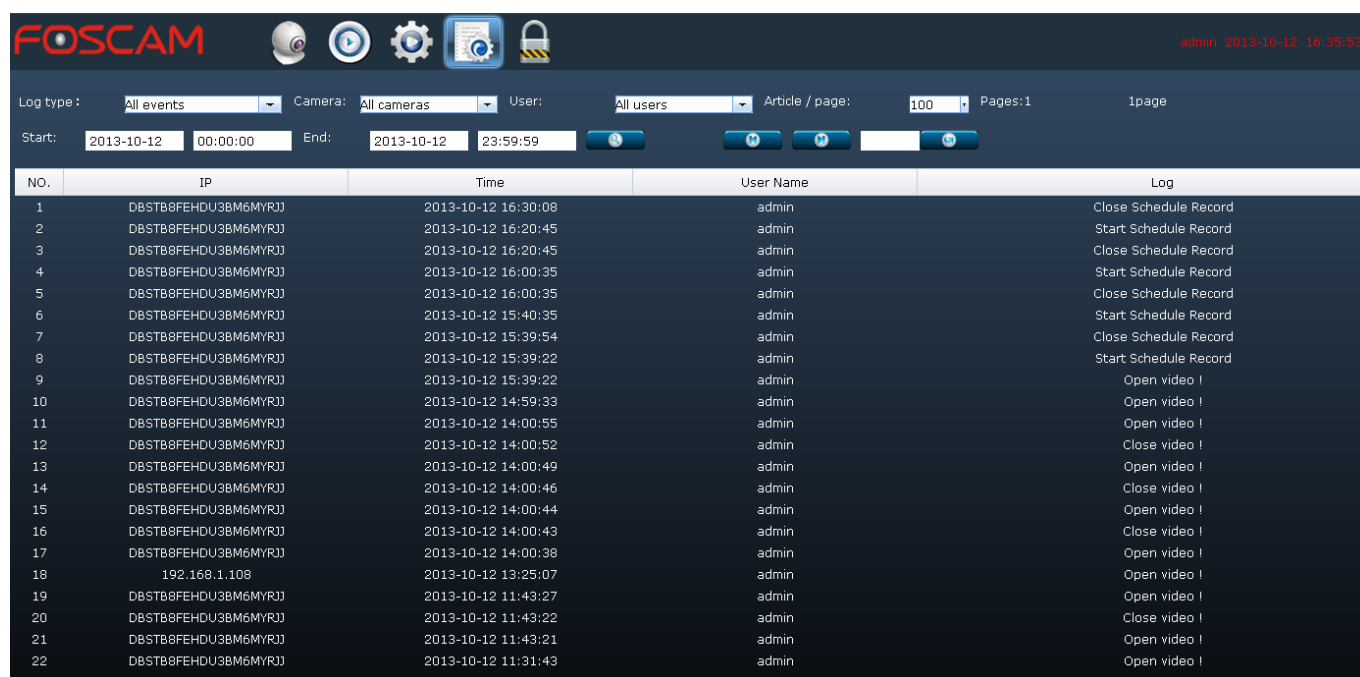
: Stop playing



: Full-screen. Press ESC and quit full-screen.

## 5 LOG

The log record shows who accessed the client and when, what did he do with which camera.



The screenshot shows the Foscam web interface. At the top, there's a navigation bar with the Foscam logo and several icons. Below it, a search bar allows filtering logs by type (All events), camera (All cameras), user (All users), and article/page (100). It also includes start and end time filters for 2013-10-12. A table below displays 22 log entries with columns for NO., IP, Time, User Name, and Log. The logs show various events like 'Close Schedule Record', 'Start Schedule Record', and 'Open video !' performed by the 'admin' user.

NO.	IP	Time	User Name	Log
1	DBSTB8FEH DU3BM6MYRJ	2013-10-12 16:30:08	admin	Close Schedule Record
2	DBSTB8FEH DU3BM6MYRJ	2013-10-12 16:20:45	admin	Start Schedule Record
3	DBSTB8FEH DU3BM6MYRJ	2013-10-12 16:20:45	admin	Close Schedule Record
4	DBSTB8FEH DU3BM6MYRJ	2013-10-12 16:00:35	admin	Start Schedule Record
5	DBSTB8FEH DU3BM6MYRJ	2013-10-12 16:00:35	admin	Close Schedule Record
6	DBSTB8FEH DU3BM6MYRJ	2013-10-12 15:40:35	admin	Start Schedule Record
7	DBSTB8FEH DU3BM6MYRJ	2013-10-12 15:39:54	admin	Close Schedule Record
8	DBSTB8FEH DU3BM6MYRJ	2013-10-12 15:39:22	admin	Start Schedule Record
9	DBSTB8FEH DU3BM6MYRJ	2013-10-12 15:39:22	admin	Open video !
10	DBSTB8FEH DU3BM6MYRJ	2013-10-12 14:59:33	admin	Open video !
11	DBSTB8FEH DU3BM6MYRJ	2013-10-12 14:00:55	admin	Open video !
12	DBSTB8FEH DU3BM6MYRJ	2013-10-12 14:00:52	admin	Close video !
13	DBSTB8FEH DU3BM6MYRJ	2013-10-12 14:00:49	admin	Open video !
14	DBSTB8FEH DU3BM6MYRJ	2013-10-12 14:00:46	admin	Close video !
15	DBSTB8FEH DU3BM6MYRJ	2013-10-12 14:00:44	admin	Open video !
16	DBSTB8FEH DU3BM6MYRJ	2013-10-12 14:00:43	admin	Close video !
17	DBSTB8FEH DU3BM6MYRJ	2013-10-12 14:00:38	admin	Open video !
18	192.168.1.108	2013-10-12 13:25:07	admin	Open video !
19	DBSTB8FEH DU3BM6MYRJ	2013-10-12 11:43:27	admin	Open video !
20	DBSTB8FEH DU3BM6MYRJ	2013-10-12 11:43:22	admin	Close video !
21	DBSTB8FEH DU3BM6MYRJ	2013-10-12 11:43:21	admin	Open video !
22	DBSTB8FEH DU3BM6MYRJ	2013-10-12 11:31:43	admin	Open video !

Figure 5.1

First choose the log type, the camera IP, User, Start and End time, then click Search, you can see all logs that satisfied conditions.


**Log type** There are four types: All events, System events, Operation events and Alarm events.

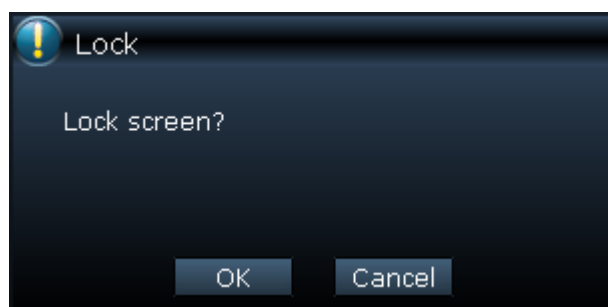
**Camera** Here will show you all cameras IP that added to the client. Select one which you want to see.

**Article/page** The record number of one page. You can select 100 or 1000.

## 6 Lock

If you are leaving your PC, you had better lock the current screen to prevent illegal user using. Click the

icon  and it will pop up a dialog box. Just click OK and lock the current screen.



## 7 Obtaining technical support

While we hope your experience with the IPCAM network camera is enjoyable and easy to use, you may experience some issues or have questions that this User's Guide has not answered.

If you have problem with FOSCAM IP camera, please first contact FOSCAM reseller for solving the problems. If our reseller cannot provide service, please contact our service department: **tech@foscam.com** .

